

TRUCK & BUS TYRES PRODUCT RANGE PIRELLI BRAND





SERIE
02

THE FUTURE IS NOW.

EFFICIENT. INNOVATIVE. SUSTAINABLE.

Brave, visionary and always driven by constant search of technological innovation, Prometeon reveals a new breakthrough. **Serie 02** – a brand new family of cutting-edge tyres, designed to perfectly balance durability and sustainability, efficiency and performance. **Let yourself be part of the future.**

PROMETEAON
TYRE SOLUTIONS FOR PROFESSIONALS

INDEX

PROMETEON: TYRE SOLUTIONS FOR PROFESSIONALS	page	4
KEY FIGURES (2022 DATA)	page	5
RANGE OVERVIEW	page	6
UNIQUE INNOVATIVE TECHNOLOGICAL PLATFORM	page	8
ABBREVIATIONS AND SYMBOLS EXPLANATION	page	9
FUEL EFFICIENCY	page	10
VERSATILITY	page	19
WINTER	page	32
COACH	page	35
URBAN	page	38
CONSTRUCTION	page	40
QUARRY & MINE	page	49
SPECIAL USE	page	51
PERFORMANCE TYRES	page	53
OTHER PRODUCTS	page	60
TYRE MARKINGS	page	61
LOAD AND SPEED TABLES	page	62
NEW EU TYRE LABELLING REGULATION	page	63
INFLATION PRESSURE	page	66
STORAGE IN A ROW ON PALLETS	page	67

PROMETEAON: TYRE SOLUTIONS FOR PROFESSIONALS



Prometeon Tyre Group is the only tyre company solely focused on the Industrial sector, for the transport of goods and people, and the Agro and OTR segments.
Prometeon has a multi-level offering with a **product portfolio that includes the PIRELLI and FORMULA brands, under license, as well as the ANTEO, ERACLE and TEGRYS brands.**

Prometeon’s PIRELLI branded range includes high performance products designed to improve the efficiency of each and every fleet, increasing driver and passenger comfort and optimizing running costs. This is the valuable heritage behind our offer.
Prometeon is focused on the continuous in-house development of innovative technological solutions, which are at the basis of the Prometeon mission to design increasingly performing and at the same time more sustainable products.
Therefore, each new product we develop with our commitment to quality and safety is marked as “Prometeon engineered”.

Prometeon crafts tyres with the objective to maximize fleet efficiency offering the right solution, taking into account the type of transport and road surface, to offer the maximum benefit for the customer. Those parameters have a direct effect on all tyre selection variables, both technical (selection of materials, design, etc.) and financial (operative costs, length of first life and useful life, etc.). The combination of application and vehicle type provides the most suitable tyre for each use.




INDEX	PROMETEAON: TYRE SOLUTIONS FOR PROFESSIONALS	KEY FIGURES (2022 DATA)	RANGE OVERVIEW	UNIQUE INNOVATIVE TECHNOLOGICAL PLATFORM	ABBREVIATIONS AND SYMBOLS EXPLANATION	FUEL EFFICIENCY	VERSATILITY	WINTER	COACH	URBAN	CONSTRUCTION	QUARRY & MINE	SPECIAL USE	PERFORMANCE TYRES	OTHER PRODUCTS	TYRE MARKINGS	LOAD AND SPEED TABLES	NEW EU TYRE LABELLING REGULATION	INFLATION PRESSURE	STORAGE IN A ROW ON PALLETS
-------	--	----------------------------	-------------------	---	---	--------------------	-------------	--------	-------	-------	--------------	------------------	----------------	----------------------	-------------------	------------------	-----------------------------	--	-----------------------	-----------------------------------

KEY FIGURES (2022 DATA)



INDEX	PROMETEON: TYRE SOLUTIONS FOR PROFESSIONALS	KEY FIGURES (2022 DATA)	RANGE OVERVIEW	UNIQUE INNOVATIVE TECHNOLOGICAL PLATFORM	ABBREVIATIONS AND SYMBOLS EXPLANATION	FUEL EFFICIENCY	VERSATILITY	WINTER	COACH	URBAN	CONSTRUCTION	QUARRY & MINE	SPECIAL USE	PERFORMANCE TYRES	OTHER PRODUCTS	TYRE MARKINGS	LOAD AND SPEED TABLES	NEW EU TYRE LABELLING REGULATION	INFLATION PRESSURE	STORAGE IN A ROW ON PALLETS
-------	---	----------------------------	-------------------	---	---	--------------------	-------------	--------	-------	-------	--------------	------------------	----------------	----------------------	-------------------	------------------	-----------------------------	--	-----------------------	-----------------------------------

RANGE OVERVIEW

		PREMIUM	PERFORMANCE
ON	 FUEL EFFICIENCY Product designed to provide low fuel consumption and total cost of ownership optimization. The best balance between mileage and fuel efficiency is found in long distance and highway routes.	H02 PROFUEL H02 PRO TRAILER H:01 PROWAY H:01 ENERGY ST:01 NEVERENDING ENERGY	
	 VERSATILITY Product designed to guarantee high mileage in any condition of usage and good resistance to highly abrasive surfaces. High level of safety on all roads and in all seasons.	R02 PROFUEL R02 PRO TRAILER R:01 TRIATHLON ST:01 TRIATHLON R:01 ST:01	ITINERIS
	 WINTER Products designed for use under critical weather conditions, snow and ice.	W:01	
	 COACH Specifically designed for comfort and safety in passenger transport, over medium and long distances.	H:01 COACH	
	 URBAN For urban passenger vehicles in stop & go traffic conditions, low average speed, continuous changes in road surfaces (asphalt, concrete, cobblestones).	U02 URBAN-e PRO MULTIAXLE	MC88 III M+S AMARANTO
ON-OFF	 CONSTRUCTION For mixed use on roads, on construction sites and under aggressive tread-wear condition.	G02 ECO PRO G02 ON-OFF PRO G02 PRO MULTIAXLE G:01 II MG:01	G88
	 QUARRY & MINE Products designed for use mainly on construction sites, in quarries and mining operations with highly aggressive tread-wear conditions.	TQ:01 ROCK	
	 SPECIAL USE Products designed for use in demanding off-the-road situations on various types of surface (asphalt, track, muddy or grassy terrain, sand). Typical use off-the-road competition vehicles and civil protection department.	S02 PISTA	

INDEX	PROMETEAON: TYRE SOLUTIONS FOR PROFESSIONALS	KEY FIGURES (2022 DATA)	RANGE OVERVIEW	UNIQUE INNOVATIVE TECHNOLOGICAL PLATFORM	ABBREVIATIONS AND SYMBOLS EXPLANATION	FUEL EFFICIENCY	VERSATILITY	WINTER	COACH	URBAN	CONSTRUCTION	QUARRY & MINE	SPECIAL USE	PERFORMANCE TYRES	OTHER PRODUCTS	TYRE MARKINGS	LOAD AND SPEED TABLES	NEW EU TYRE LABELLING REGULATION	INFLATION PRESSURE	STORAGE IN A ROW ON PALLETS
-------	--	----------------------------	-------------------	---	---	--------------------	-------------	--------	-------	-------	--------------	------------------	----------------	----------------------	-------------------	------------------	-----------------------------	--	-----------------------	-----------------------------------

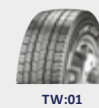
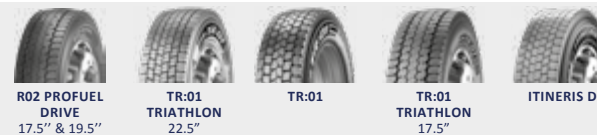
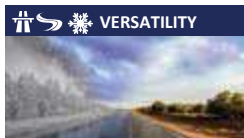
RANGE OVERVIEW

STEER / MULTIAXLE

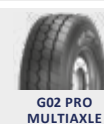
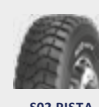
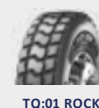
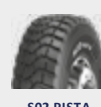
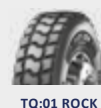
DRIVE

TRAILER

ON



ON-OFF

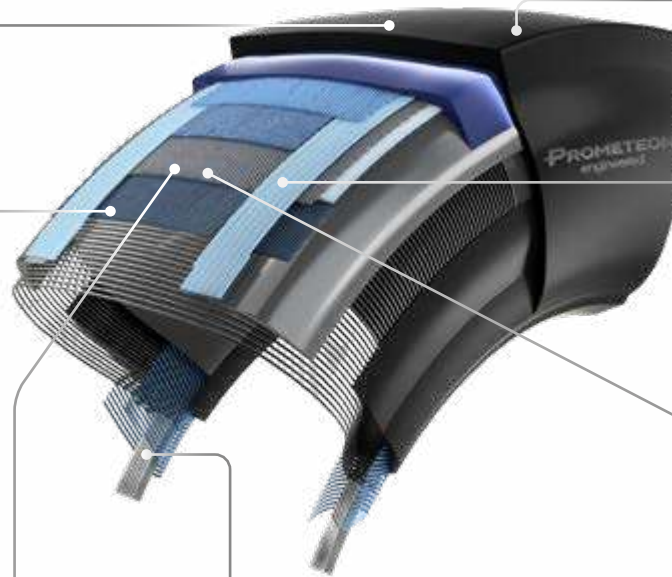


UNIQUE INNOVATIVE TECHNOLOGICAL PLATFORM



Highly innovative PRO Grip Environment Approach compound formulated to improve the **tyre efficiency** and **safe performance** while **reducing environmental impact**.

PROMETEAON
engineered



The innovative Step Shoulder Rib Profile allows the correct distribution of footprint contact pressure, promoting **even wear** and **mileage**.



The Super High Tensile Belt cord allows high flexibility and prevention of corrosion propagation for:

- superior **integrity**
- high **resistance** to aging

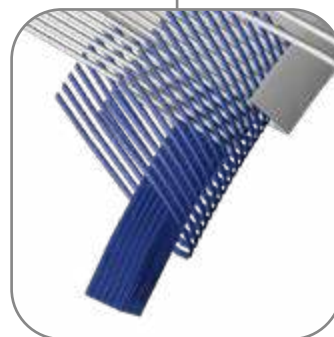
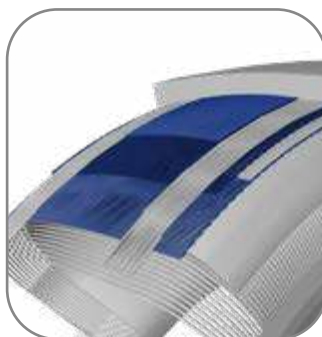


The Spiral Wire Technology materializes in the bigger steel cable diameter enhancing optimization of the total cost of ownership, thanks to:

- high **durability**
- long **tyre life**



The innovative Low Energy Dissipation Belts configuration ensures tyre weight optimization and lower energy dissipation enabling **low rolling resistance** generation.



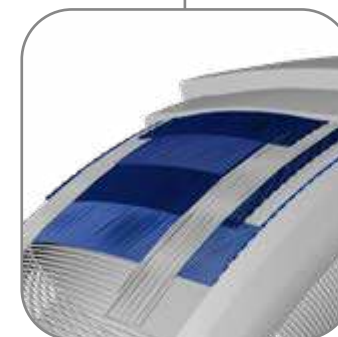
The reinforced Cross Over Bead, combined with the new geometry of the rectangular wire steel, ensures:

- great **flexibility**
- bead seating with superior **longevity** throughout the entire casing life cycle
- excellent resistance to **high load capacities**



The new High Resistance 4 Belts structure promotes casing flexibility and structural resistance for:

- **extended tyre life**
- **even wear**
- **handling** on uneven road surfaces



The technological package may vary by product and is valid for SERIE02 products

INDEX	PROMETEAON: TYRE SOLUTIONS FOR PROFESSIONALS	KEY FIGURES (2022 DATA)	RANGE OVERVIEW	UNIQUE INNOVATIVE TECHNOLOGICAL PLATFORM	ABBREVIATIONS AND SYMBOLS EXPLANATION	FUEL EFFICIENCY	VERSATILITY	WINTER	COACH	URBAN	CONSTRUCTION	QUARRY & MINE	SPECIAL USE	PERFORMANCE TYRES	OTHER PRODUCTS	TYRE MARKINGS	LOAD AND SPEED TABLES	NEW EU TYRE LABELLING REGULATION	INFLATION PRESSURE	STORAGE IN A ROW ON PALLETS
-------	--	----------------------------	-------------------	---	---	--------------------	-------------	--------	-------	-------	--------------	------------------	----------------	----------------------	-------------------	------------------	-----------------------------	--	-----------------------	-----------------------------------

ABBREVIATIONS AND SYMBOLS EXPLANATION

This list contains the explanation of the abbreviations and symbols you can find in the products' descriptive pages and technical tables.



MUD AND SNOW



FREE ROLLING TYRE



PROFESSIONAL OFF ROAD
TYRES, OUT OF THE SCOPE
OF EU REGULATION 2020/740



MINE LOGGING



MULTI PURPOSE TYRE



RADIO FREQUENCY
IDENTIFICATION DEVICE



RECOMMENDED



ALLOWED



ALSO FOR USE ON FRONT AXLES
(ALL WHEEL DRIVE VEHICLES)

EU Tyre Label Regulation 2020/740 – Label parameters



FUEL EFFICIENCY CLASS



WET GRIP CLASS



EXTERNAL ROLLING
NOISE CLASS



SNOW GRIP / 3PMSF MARKING

INDEX	PROMETEAON: TYRE SOLUTIONS FOR PROFESSIONALS	KEY FIGURES (2022 DATA)	RANGE OVERVIEW	UNIQUE INNOVATIVE TECHNOLOGICAL PLATFORM	ABBREVIATIONS AND SYMBOLS EXPLANATION	FUEL EFFICIENCY	VERSATILITY	WINTER	COACH	URBAN	CONSTRUCTION	QUARRY & MINE	SPECIAL USE	PERFORMANCE TYRES	OTHER PRODUCTS	TYRE MARKINGS	LOAD AND SPEED TABLES	NEW EU TYRE LABELLING REGULATION	INFLATION PRESSURE	STORAGE IN A ROW ON PALLETS
-------	--	----------------------------	-------------------	---	---	--------------------	-------------	--------	-------	-------	--------------	------------------	----------------	----------------------	-------------------	------------------	-----------------------------	--	-----------------------	-----------------------------------



FUEL EFFICIENCY



H02 PROFUEL™ STEER



H02 PROFUEL™ DRIVE



H02 PRO TRAILER



FH:01™ PROWAY™



TH:01™ PROWAY™



FH:01™ ENERGY™



TH:01™ ENERGY™



ST:01™ NEVERENDING™
ENERGY

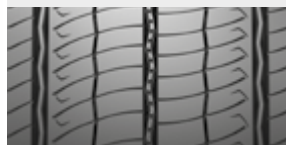
H02 PROFUEL™ STEER



The latest generation of steer tyres for long-haul transport designed for maximum efficiency and safety, and enhanced even wear and mileage.



Innovative tread pattern design



Even wear

New pattern geometry featuring innovative high density and full depth wave sipes



Great wet braking and snow grip performance for the maximum safety

HGE – High Grip Evolution – technology (Prometeon patent) featuring innovative grooves design



Enhanced grip performance throughout the tyre life, low noise generation for better driving comfort

Innovative median grooves and large shoulder grooves design









Ideal tread stiffness, excellent mileage performance, enhanced handling and effective water drainage

Stone ejectors at the bottom of the central groove



Stones trapping prevention, enhanced tyre durability and retreadability

SIZE	LOAD INDEX / SPEED CODE	MARKING						
315/70 R 22.5	156/150 L (154/150 M)	M+S	A	B	A	67dB	✓	
315/80 R 22.5*	158/150 L (156/150 M)	M+S	A	B	A	71dB	✓	
385/55 R 22.5	160 K (158 L)	M+S	A	B	A	71dB	✓	
385/65 R 22.5*	164 K (158 L)	M+S HL	A	B	A	71dB	✓	

(*) UNDER PREPARATION

H02 PROFUEL™ DRIVE



The latest generation of drive tyres for long-haul transport designed for maximum efficiency and safety, and enhanced even wear and mileage.



Compact tread blocks design

High pattern stiffness, low rolling resistance and even wear, with no compromise on mileage and comfort

Innovative high density and full depth wave sipes design

Great traction, wet braking and snow grip performance

HGE – High Grip Evolution – technology (Prometeon patent) featuring innovative grooves design

Enhanced grip performance throughout the tyre life, low noise generation for great driving comfort

New shoulder lugs profile

High traction performance and effective water drainage

SIZE	LOAD INDEX / SPEED CODE	MARKING					
315/70 R 22.5	154/150 L (152/148 M)	M+S	A	B	A	71dB	✓
315/80 R 22.5*	158/150 L (156/150 M)	M+S	A	B	B	73dB	✓

(*) UNDER PREPARATION

H02 PRO TRAILER



The latest generation of trailer tyres for long-haul transport designed for maximum efficiency and for fleet operating costs optimization. Low rolling resistance, great wet braking performance and high load capacity.

Innovative tread pattern design is characterized by:

4 narrow central grooves

2 large shoulder grooves

High pattern stiffness and low rolling resistance, with no compromise on mileage.
Great handling behavior and effective water drainage

Innovative variable grooves design

Superior wet handling behavior for the maximum safety, and low noise emission for maximum comfort

Circumferential holes in the central grooves

Great stability and braking in all weather conditions

SIZE	LOAD INDEX / SPEED CODE	MARKING								
435/50 R 19.5	164 J	M+S FRT HL	A	B	A	69dB	✓			
445/45 R 19.5	164 J	M+S FRT HL	B	B	A	69dB	✓			
385/55 R 22.5*	164 K	M+S FRT HL								
385/65 R 22.5*	164K (158L)	M+S FRT HL								✓

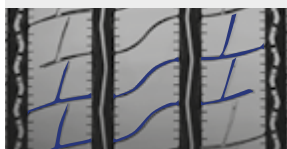
(*) UNDER PREPARATION

FH:01™ PROWAY™



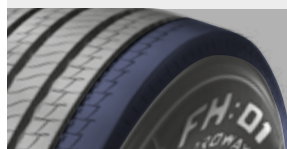
Low fuel consumption; great efficiency on highways and performance in winter conditions.

Innovative wave sipes design and 3PMSF marking



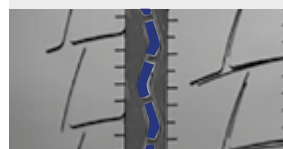
Superior handling and grip performance in all weather conditions and on all road surfaces

RSR - Rotated Shoulder Rib - for the correct distribution of the footprint contact pressure







Optimal even wear and high mileage

Stone ejectors at the bottom of the lateral grooves



Stones trapping prevention and enhanced tyre durability and retreadability

SIZE	LOAD INDEX / SPEED CODE	MARKING					
315/60 R 22.5*	154/148 L	M+S	B	A	A	69dB	✓
315/70 R 22.5	156/150 L (154/150 M)	M+S	B	B	A	69dB	✓
315/80 R 22.5	158/150 L (156/150 M)	M+S	B	A	A	69dB	✓

(*) RFID MARKING

TH:01™ PROWAY™



Low fuel consumption; great efficiency on highways and performance in winter conditions.



Advanced intermediate groove shapes design

Constant grip throughout the tyre life

Deep and high density siping and 3PMSF marking

Maximum traction on both wet & dry asphalt, snow grip and reduced breaking distance

Compact tread blocks design. High land to sea ratio and uniform footprint contact area

High tread life, low rolling resistance and low noise generation

SIZE	LOAD INDEX / SPEED CODE	MARKING					
315/60 R 22.5*	152/148 L	M+S	B	B	A	71dB	✓
315/70 R 22.5	154/150 L (152/148 M)	M+S	B	B	A	72dB	✓
315/80 R 22.5	156/150 L (154/150 M)	M+S	B	B	A	72dB	✓

(*) RFID MARKING

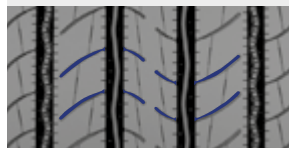
INDEX	PROMETEON: TYRE SOLUTIONS FOR PROFESSIONALS	KEY FIGURES (2022 DATA)	RANGE OVERVIEW	UNIQUE INNOVATIVE TECHNOLOGICAL PLATFORM	ABBREVIATIONS AND SYMBOLS EXPLANATION	FUEL EFFICIENCY	VERSATILITY	WINTER	COACH	URBAN	CONSTRUCTION	QUARRY & MINE	SPECIAL USE	PERFORMANCE TYRES	OTHER PRODUCTS	TYRE MARKINGS	LOAD AND SPEED TABLES	NEW EU TYRE LABELLING REGULATION	INFLATION PRESSURE	STORAGE IN A ROW ON PALLETS
-------	---	-------------------------	----------------	--	---------------------------------------	-----------------	-------------	--------	-------	-------	--------------	---------------	-------------	-------------------	----------------	---------------	-----------------------	----------------------------------	--------------------	-----------------------------

FH:01™ ENERGY™



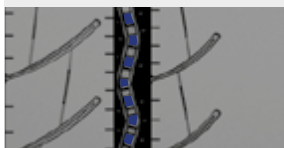
The optimum combination between fuel efficiency and high mileage.
Maximum steering precision and progressive response.

Innovative groove geometry
(wave shape)



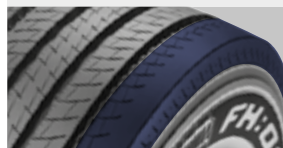
Progressive response and
steering precision

Stone ejectors at the
bottom of lateral grooves



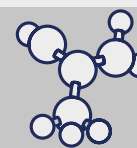
Stones trapping prevention
for great durability and
retreadability

RSR - Rotated Shoulder Rib -
for the correct distribution
of the footprint contact
pressure



Optimal even wear
and high mileage

Compound formulation
enriched in silica and nano
filler



Low heat generation
for low rolling resistance,
long tyre life and
retreadability

SIZE	LOAD INDEX / SPEED CODE	MARKING					
275/70 R 22.5*	148/145 M (150/147 L)	M+S	C	B	A	70dB	✓
295/60 R 22.5	150/147 L	M+S	C	B	B	72dB	✓
305/70 R 22.5	152/150 L (150/148 M)	M+S	B	B	A	71dB	✓
385/55 R 22.5**	158 L (160 K)	M+S	B	A	A	71dB	✓
385/65 R 22.5	160 K (158 L)	M+S	B	A	B	71dB	✓

(*) RFID MARKING

(**) TREAD PATTERN FH:01 II ENERGY WITH RFID MARKING

TH:01™ ENERGY™



The perfect balance between fuel efficiency and high mileage, combined with grip and traction on wet and dry surfaces.

Deep siping

Traction during whole tyre life, great wet grip and reduced braking distance

Close tread blocks and high ties between shoulder blocks

Low rolling resistance, great frictionable surface area for long tread life and acoustic comfort

Directional tread pattern

Grip performance on both wet and dry surfaces

Compound formulation enriched in silica and nano filler

Low heat generation for low rolling resistance, long tyre life and retreadability

SIZE	LOAD INDEX / SPEED CODE	MARKING					
275/70 R 22.5 ^{^*}	148/145 M (150/147 L)	M+S	D	B	A	72dB	✓
295/60 R 22.5	150/147 L	M+S	D	B	B	75dB	✓
305/70 R 22.5 [^]	152/150 L (150/148 M)	M+S	C	B	A	73dB	✓

([^]) STOCK CLEARANCE
(^{*}) RFID MARKING

ST:01™ NEVERENDING™ ENERGY



“A” EU label classification in rolling resistance stands for top fuel efficiency performance.
Innovative technologies and tread design promote mileage and retreadability.

Innovative shape of central grooves	Lateral reinforced kerbing	5 wide straight circumference ribs	Reinforced bead geometry	High silica content compound
Compound movement reduction and low rolling resistance	Great resistance to impact and rubbing	Great tear resistance	High resistance to lateral impacts	Low heat generation for low rolling resistance, long tyre life and retreadability

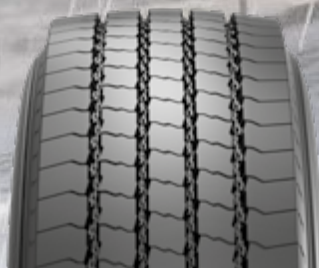
SIZE	LOAD INDEX / SPEED CODE	MARKING					
385/55 R 22.5	160 K	M+S FRT	A	B	A	68dB	
385/65 R 22.5	160 K (158 L)	M+S FRT	A	B	A	68dB	



VERSATILITY



R02 PROFUEL™ STEER 22.5"



R02 PROFUEL™ STEER
17.5" & 19.5"



R02 PROFUEL™ DRIVE
17.5" & 19.5"



R02 PRO TRAILER



FR:01™ TRIATHLON™ 22.5"



TR:01™ TRIATHLON™ 22.5"



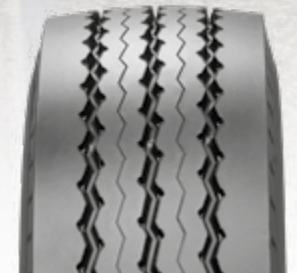
ST:01™ TRIATHLON™



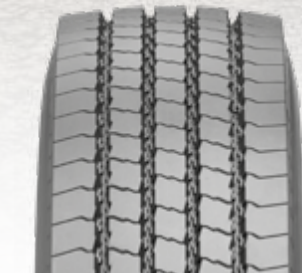
FR:01™



TR:01™



ST:01™



FR:01™ TRIATHLON™ 17.5"



TR:01™ TRIATHLON™ 17.5"

R02 PROFUEL™ STEER 22.5"

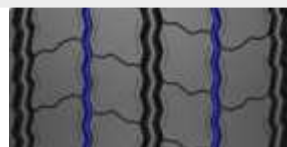


The latest generation of steer tyres for versatility application, ensuring competitive fuel efficiency, high mileage and integrity.

Innovative tread pattern design characterized by:

3 large grooves

2 narrow grooves



Guarantee even wear, mileage and deliver handling in severe wet conditions

Progressive entry of sipes under the footprint



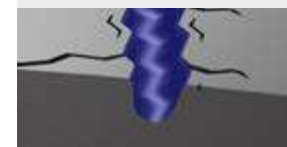
Maximum driving comfort

New functional sipes



Superior grip, performance in different weather conditions and constant safety

HGE - High Grip Evolution - technology (Prometeon patent) featuring innovative grooves design

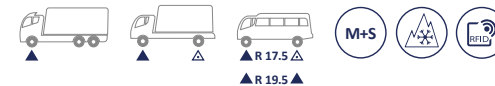


Enhanced grip performance throughout the tyre life, low noise generation for great driving comfort

SIZE	LOAD INDEX / SPEED CODE	MARKING					
315/70 R 22.5	156/150 L (154/150 M)	M+S	B	B	A	69dB	✓
355/50 R 22.5	156 L	M+S	B	C	A	69dB	✓
385/55 R 22.5	162 K (158 L)	M+S	B	B	A	69dB	✓
385/65 R 22.5*	164 K (158 L)	M+S HL					✓

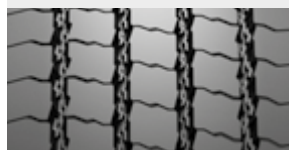
(*) UNDER PREPARATION

R02 PROFUEL™ STEER 17.5" & 19.5"



The latest generation of steer tyres for regional transport designed for maximum versatility, efficiency and high safety standards.

Innovative tread pattern with 4 zig-zag shape grooves and robust longitudinal ribs



Reduced braking distance, improved road holding and driving safety

Stone ejectors at the bottom of all grooves



Stones trapping prevention for great durability and retreadability

New shoulder tread contour



Uniform footprint contact pressure delivering even wear and mileage performance, as well as low noise emission for maximum comfort

Functional sipes



Great traction and superior snow grip performance

SIZE	LOAD INDEX / SPEED CODE	MARKING						SIZE	LOAD INDEX / SPEED CODE	MARKING						
205/75 R 17.5	124/122 M	M+S	C	B	A	68dB	✓	245/70 R 19.5	136/134 M	M+S	C	B	A	70dB	✓	
215/75 R 17.5	128/126 M	M+S	C	B	A	69dB	✓	265/70 R 19.5	140/138 M	M+S	C	B	A	70dB	✓	
225/75 R 17.5	129/127 M	M+S	C	B	A	69dB	✓	285/70 R 19.5	146/144 L	M+S	B	B	A	72dB	✓	
235/75 R 17.5	132/130 M	M+S	C	B	A	70dB	✓	305/70 R 19.5	148/145 M	M+S	C	C	A	72dB	✓	
245/70 R 17.5	136/134 M	M+S	C	B	A	71dB	✓									
265/70 R 17.5	140/138 M	M+S	C	B	A	71dB	✓									

R02 PROFUEL™ DRIVE 17.5" & 19.5"



The latest generation of drive tyres for regional transport designed for maximum versatility, efficiency and high safety standards.

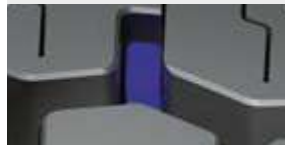


New tread pattern geometry featuring innovative tread block pitch sequence



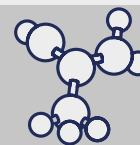
Enhanced mileage and even wear for the maximum safety

Innovative bumper technology



Reduced lateral movement and vibrations enhancing regular wear, acoustic comfort and stone trapping prevention

Innovative compound



Low rolling resistance, high grip and durability

Optimized sipes and transversal grooves design



Superior traction and snow grip performance

SIZE	LOAD INDEX / SPEED CODE	MARKING					
205/75 R 17.5	124/122 M	M+S	C	C	A	70dB	✓
215/75 R 17.5	126/124 M	M+S	C	C	A	70dB	✓
225/75 R 17.5	129/127 M	M+S	C	C	A	71dB	✓
235/75 R 17.5	132/130 M	M+S	C	C	A	72dB	✓
245/70 R 17.5	136/134 M	M+S	C	C	A	73dB	✓
265/70 R 17.5	140/138 M	M+S	C	C	A	71dB	✓


SIZE	LOAD INDEX / SPEED CODE	MARKING					
245/70 R 19.5	136/134 M	M+S	C	B	A	73dB	✓
265/70 R 19.5	140/138 M	M+S	C	B	A	72dB	✓
285/70 R 19.5	146/144 L	M+S	C	C	A	72dB	✓
305/70 R 19.5	148/145 M	M+S	C	C	B	74dB	✓

R02 PRO TRAILER















The latest generation of trailer tyres for regional and long-haul transport designed for maximum versatility, intergity and mileage.

Optimized tread pattern design with wide tread and deep grooves



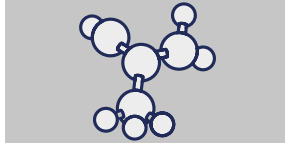
Regular wear and enhanced mileage

New pattern geometry




Great wet braking and effective water drainage

Innovative tread compound



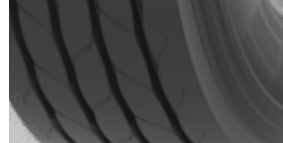
Low heat generation for low rolling resistance, long tyre life and great retreadability

Robust shoulder








Tear resistance to chipping and chunking and resistance to lateral sliding

New reinforced casing construction



Increased load capacity up to 10 tonnes¹ per axle

SIZE	LOAD INDEX / SPEED CODE	MARKING					
385/55 R 22.5*	164 K	FRT M+S HL					✓
385/65 R 22.5	164 K (158 L)	FRT M+S HL	B	B	A	70dB	✓

(*) UNDER PREPARATION

(1) = VS ST:01 TRIATHLON

FR:01™ TRIATHLON™ 22.5"



Designed for use in highway and regional applications in all weather conditions, performing at a high level in snow grip and wet braking, dry and wet handling, and even wear.

<p>Tread design with 4 zig-zag shape grooves and robust longitudinal ribs</p> <p>Reduced braking distance, great road holding and driving safety</p>	<p>Innovative shoulder tread contour</p> <p>Correct distribution of footprint contact pressure to ensure even wear and high mileage</p>	<p>Functional sipes and ejectors at the bottom of all grooves</p> <p>Traction and stone trapping prevention</p>
--	---	---

SIZE	LOAD INDEX / SPEED CODE	MARKING	0	1	2	3	4
295/80 R 22.5	154/149 M	M+S	C	B	A	71dB	✓
315/60 R 22.5*	154/148 L	M+S	C	B	A	71dB	✓
315/70 R 22.5	156/150 L (154/150 M)	M+S	C	B	A	72dB	✓
315/80 R 22.5	156/150 L (154/150 M)	M+S	C	B	A	71dB	✓
385/55 R 22.5*	160 K (158 L)	M+S	B	B	A	72dB	✓
385/65 R 22.5	164 K (158 L)	M+S HL	B	B	A	71dB	✓

(*) RFID MARKING

TR:01™ TRIATHLON™ 22.5"



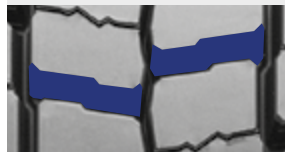
Designed for use in highway and regional applications in all weather conditions providing high mileage, low fuel consumption, while performing at a high level in snow grip and wet braking, and dry and wet handling.

Directional tread pattern with completely new tread block pitch sequence



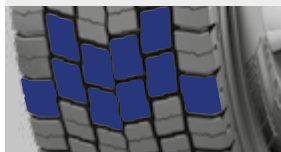
High mileage, low rolling resistance, uniform wear and great traction

Transversal grooves with optimized geometry



Excellent even wear and easy stones ejection

3D sipes (patented) solution in the central and shoulder tread block



Enhanced snow grip and snow traction, regular wear, acoustic comfort and optimal behaviour in dry and wet conditions

SIZE	LOAD INDEX / SPEED CODE	MARKING						
295/60 R 22.5	150/147 K	M+S	C	C	B	76dB	✓	
295/80 R 22.5	152/148 M	M+S	D	B	A	73dB	✓	
315/60 R 22.5*	152/148 L	M+S	D	B	B	76dB	✓	
315/70 R 22.5	154/150 L (152/148 M)	M+S	D	B	B	75dB	✓	
315/80 R 22.5	156/150 L (154/150 M)	M+S	D	B	A	73dB	✓	

(*) RFID MARKING

ST:01™ TRIATHLON™



Designed for fitment on trailer and semi-trailer in highway and regional applications in all weather conditions.



Innovative tread and sidewall design

Withstand stresses and even wear of the surface in contact with the road

Optimized groove geometry

Stones trapping prevention, high resistance to lateral friction and lateral holding in wet conditions

Transversal grooves on the 3 central ribs

Great adherence in winter conditions and on slippery road surfaces

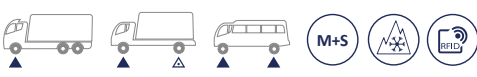
Lateral reinforced kerbing

Great resistance to lateral impact and skidding in the shoulder zone

SIZE	LOAD INDEX / SPEED CODE	MARKING					
385/55 R 22.5	160 K	M+S FRT	B	A	A	71dB	✓

INDEX	PROMETEON: TYRE SOLUTIONS FOR PROFESSIONALS	KEY FIGURES (2022 DATA)	RANGE OVERVIEW	UNIQUE INNOVATIVE TECHNOLOGICAL PLATFORM	ABBREVIATIONS AND SYMBOLS EXPLANATION	FUEL EFFICIENCY	VERSATILITY	WINTER	COACH	URBAN	CONSTRUCTION	QUARRY & MINE	SPECIAL USE	PERFORMANCE TYRES	OTHER PRODUCTS	TYRE MARKINGS	LOAD AND SPEED TABLES	NEW EU TYRE LABELLING REGULATION	INFLATION PRESSURE	STORAGE IN A ROW ON PALLETS
-------	---	-------------------------	----------------	--	---------------------------------------	-----------------	-------------	--------	-------	-------	--------------	---------------	-------------	-------------------	----------------	---------------	-----------------------	----------------------------------	--------------------	-----------------------------

FR:01™



Tyre designed for fitment on steer axle ensuring cost efficiency, comfort and safety.

Innovative shoulder tread contour (patented) for the correct distribution of footprint contact pressure

Optimal even wear and high mileage

Stone ejectors at the bottom of the grooves

Stones trapping prevention

Sidewall protection ribs

High resistance to lateral impacts and abrasion

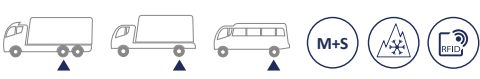
Tread design with 4 zig-zag shape grooves and robust longitudinal ribs

Braking distance reduction and enhanced driving safety

SIZE	LOAD INDEX / SPEED CODE	MARKING					
305/70 R 19.5^	148/145 M	M+S	C	B	A	66dB	✓

(^) STOCK CLEARANCE

TR:01™



Tyre designed for fitment on drive axle ensuring cost efficiency, comfort and safety.



Directional tread pattern and optimized tread pattern design

Traction and acoustic comfort

Optimized groove depth

Robustness and mileage

Sidewall protection ribs

High resistance to lateral impacts and abrasion

Lateral grooves with optimized geometry and depth

Even wear and easy stones ejection

SIZE	LOAD INDEX / SPEED CODE	MARKING					
305/70 R 19.5^	148/145 M	M+S	D	B	A	71dB	✓

(^) STOCK CLEARANCE

INDEX	PROMETEAON: TYRE SOLUTIONS FOR PROFESSIONALS	KEY FIGURES (2022 DATA)	RANGE OVERVIEW	UNIQUE INNOVATIVE TECHNOLOGICAL PLATFORM	ABBREVIATIONS AND SYMBOLS EXPLANATION	FUEL EFFICIENCY	VERSATILITY	WINTER	COACH	URBAN	CONSTRUCTION	QUARRY & MINE	SPECIAL USE	PERFORMANCE TYRES	OTHER PRODUCTS	TYRE MARKINGS	LOAD AND SPEED TABLES	NEW EU TYRE LABELLING REGULATION	INFLATION PRESSURE	STORAGE IN A ROW ON PALLETS
-------	--	-------------------------	----------------	--	---------------------------------------	-----------------	-------------	--------	-------	-------	--------------	---------------	-------------	-------------------	----------------	---------------	-----------------------	----------------------------------	--------------------	-----------------------------

ST:01™



Designed for fitment on trailer and semi-trailer to ensure resistance to load, robustness, mileage and retreadability.

<p>Increased tread width and groove depth</p> <p>Mileage</p>	<p>Reinforced sidewalls</p> <p>Resistance to lateral impacts and abrasion</p>	<p>3 Zig-zag shape grooves and robust ribs</p> <p>Great lateral holding and high tear resistance</p>	<p>Optimized tread profile</p> <p>Correct distribution of footprint contact pressure to improve even wear and ensure high mileage</p>
--	---	--	---

SIZE	LOAD INDEX / SPEED CODE	MARKING					
205/65 R 17.5	129/127 J (132/132 F)	M+S FRT	D	B	A	68dB	✓
215/75 R 17.5	135/133 J	M+S FRT	D	B	A	70dB	✓
235/75 R 17.5	143/141 J (144/144 F)	M+S FRT	C	C	A	69dB	✓
245/70 R 17.5	143/141 J (146/146 F)	M+S FRT	C	C	A	69dB	✓
245/70 R 19.5*	141/140 J	M+S FRT	D	C	B	71dB	✓
265/70 R 19.5*	143/141 J	M+S FRT	D	A	B	72dB	✓
285/70 R 19.5*	150/148 J	M+S FRT	D	A	B	72dB	✓

(*) RFID MARKING

FR:01™ TRIATHLON™ 17.5"



Tyres for fitment on steer axle of truck and minibus providing high mileage, even wear, superior snow grip.

<p>4 grooves zig-zag shaped and robust longitudinal ribs</p> <p>Wet grip, roadholding, steering precision and short braking distance</p>	<p>Shoulder tread contour for the correct distribution of footprint contact pressure</p> <p>High mileage</p>	<p>Full depth functional sipes and ejectors at the bottom of all grooves</p> <p>High mileage</p>	<p>Reinforced sidewall with higher thickness and special compound</p> <p>High impact resistance and durability</p>
--	--	--	--

SIZE	LOAD INDEX / SPEED CODE	MARKING					
205/75 R 17.5*	124/122 M	M+S	D	C	A	69dB	✓
245/70 R 17.5*	136/134 M	M+S	D	B	A	71dB	✓

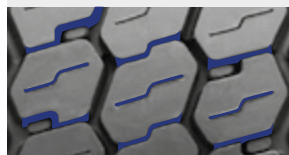
(*) = STOCK CLEARANCE

TR:01™ TRIATHLON™ 17.5"



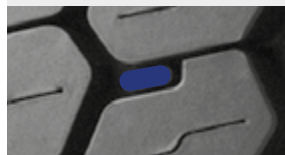
Tyres for fitment on drive axle of truck and minibus providing high mileage, superior grip and traction in all weather conditions.

Dense full depth sipes and transversal grooves



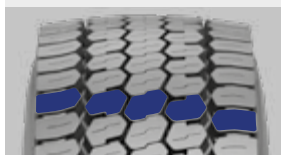
Excellent snow grip performance

Tread pattern design with bumper technology (patented)



Regular wear and acoustic comfort, and stone trapping prevention

Tread pattern concept with innovative tread block pitch sequence



High mileage

Reinforced sidewall with higher thickness and special compound



High impact resistance and durability

SIZE	LOAD INDEX / SPEED CODE	MARKING					
205/75 R 17.5*	124/122 M	M+S	D	C	A	71dB	✓
245/70 R 17.5*	136/134 M	M+S	D	B	A	72dB	✓

(*) = STOCK CLEARANCE



WINTER



FW:01™

TW:01™

INDEX	PROMETEAON: TYRE SOLUTIONS FOR PROFESSIONALS	KEY FIGURES (2022 DATA)	RANGE OVERVIEW	UNIQUE INNOVATIVE TECHNOLOGICAL PLATFORM	ABBREVIATIONS AND SYMBOLS EXPLANATION	FUEL EFFICIENCY	VERSATILITY	WINTER	COACH	URBAN	CONSTRUCTION	QUARRY & MINE	SPECIAL USE	PERFORMANCE TYRES	OTHER PRODUCTS	TYRE MARKINGS	LOAD AND SPEED TABLES	NEW EU TYRE LABELLING REGULATION	INFLATION PRESSURE	STORAGE IN A ROW ON PALLETS
-------	--	----------------------------	-------------------	---	---	--------------------	-------------	--------	-------	-------	--------------	------------------	----------------	----------------------	-------------------	------------------	-----------------------------	--	-----------------------	-----------------------------------



FW:01™



3SB



BWC



DLTC



FRC



HBW



RSR



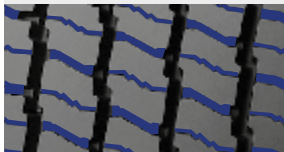
Designed to be reliable and safe in critical winter conditions, while ensuring high mileage, grip and retreadability.

Shoulder tread contour designed for the correct distribution of footprint contact pressure



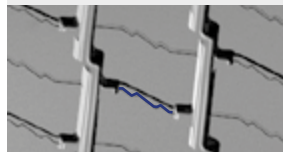
Assure even wear and high mileage

Dense siping



Excellent grip and steering control on wet surfaces

Deep siping in central rib bridges



Traction and snow grip beyond half tyre wear

Special tread compound formulation



Resistance at low temperature

SIZE	LOAD INDEX / SPEED CODE	MARKING						
295/80 R 22.5	154/149 M	M+S	C	A	B	72dB	✓	
315/70 R 22.5	156/150 L (154/150 M)	M+S	C	B	B	73dB	✓	
315/80 R 22.5	156/150 L (154/150 M)	M+S	C	A	B	72dB	✓	
385/55 R 22.5*	158 L (160 K)	M+S	C	B	B	73dB	✓	
385/65 R 22.5	158 L (160 K)	M+S	C	B	B	73dB	✓	

(*) RFID MARKING



WINTER

TW:01™

SATT™
Spirit Advanced Technology for Trucks

3SB



BWC



DLTC



FRC



Designed to provide maximum traction on snow covered surfaces and grip on wet and dry roads, while ensuring mileage and retreadability.

Optimized sequence of dense transversal siping and grooves



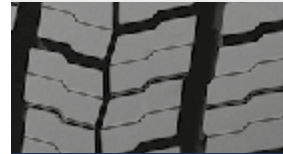
Snow trapping prevention for 'snow on snow' grip, traction and stability

Directional tread pattern



Optimized grip performance on both wet and dry surfaces

Reduced tread block mobility





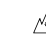


Low rolling resistance, enhanced fuel saving and even wear

Special tread compound formulation



Resistance at low temperature

SIZE	LOAD INDEX / SPEED CODE	MARKING					
295/80 R 22.5	152/148 M	M+S	D	A	B	75dB	✓
315/70 R 22.5	154/150 L (152/148 M)	M+S	D	B	B	75dB	✓
315/80 R 22.5	156/150 L (154/150 M)	M+S	D	B	B	75dB	✓



COACH



FH:01™ COACH

TH:01™ COACH

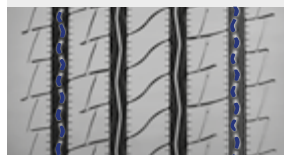
INDEX	PROMETON: TYRE SOLUTIONS FOR PROFESSIONALS	KEY FIGURES (2022 DATA)	RANGE OVERVIEW	UNIQUE INNOVATIVE TECHNOLOGICAL PLATFORM	ABBREVIATIONS AND SYMBOLS EXPLANATION	FUEL EFFICIENCY	VERSATILITY	WINTER	COACH	URBAN	CONSTRUCTION	QUARRY & MINE	SPECIAL USE	PERFORMANCE TYRES	OTHER PRODUCTS	TYRE MARKINGS	LOAD AND SPEED TABLES	NEW EU TYRE LABELLING REGULATION	INFLATION PRESSURE	STORAGE IN A ROW ON PALLETS
-------	--	----------------------------	-------------------	---	---	--------------------	-------------	--------	-------	-------	--------------	------------------	----------------	----------------------	-------------------	------------------	-----------------------------	--	-----------------------	-----------------------------------

FH:01™ COACH



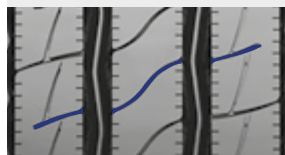
All position tyre designed for the latest generation of electric and hybrid vehicles. High efficiency, combined with durability and maximum handling.

Ejectors at the bottom of the lateral grooves



Stone trapping prevention, durability and retreadability

Innovative wave sipes design and 3PMSF markings



Superior snow grip and handling in all weather conditions

Optimized tread pattern design



Low noise emission

SIZE	LOAD INDEX / SPEED CODE	MARKING					
295/80 R 22.5	156/149 M	M+S HL	B	B	A	68dB	✓
315/80 R 22.5	158/150 L (156/150 M)	M+S HL	B	A	A	69dB	✓

TH:01™ COACH



Designed for fitment on drive axle of the latest generation of electric and hybrid vehicles. High efficiency, combined with traction and maximum comfort.

<p>Compact tread block design and high land to sea ratio</p> <p>Uniform contact footprint area for high tyre life and a low rolling resistance</p>	<p>Deep and higher density siping, and advanced groove shape design (patented)</p> <p>Traction in all weather conditions and constant grip during all tyre life</p>	<p>Optimized lateral grooves</p> <p>Low noise emission, high handling and comfort</p>
--	---	---

SIZE	LOAD INDEX / SPEED CODE	MARKING					
295/80 R 22.5	152/148 M	M+S	B	B	A	69dB	✓

INDEX	PROMETON: TYRE SOLUTIONS FOR PROFESSIONALS	KEY FIGURES (2022 DATA)	RANGE OVERVIEW	UNIQUE INNOVATIVE TECHNOLOGICAL PLATFORM	ABBREVIATIONS AND SYMBOLS EXPLANATION	FUEL EFFICIENCY	VERSATILITY	WINTER	COACH	URBAN	CONSTRUCTION	QUARRY & MINE	SPECIAL USE	PERFORMANCE TYRES	OTHER PRODUCTS	TYRE MARKINGS	LOAD AND SPEED TABLES	NEW EU TYRE LABELLING REGULATION	INFLATION PRESSURE	STORAGE IN A ROW ON PALLETS
-------	--	-------------------------	----------------	--	---------------------------------------	-----------------	-------------	--------	-------	-------	--------------	---------------	-------------	-------------------	----------------	---------------	-----------------------	----------------------------------	--------------------	-----------------------------



URBAN



U02 URBAN-e PRO
MULTIAXLE

INDEX	PROMETEAON: TYRE SOLUTIONS FOR PROFESSIONALS	KEY FIGURES (2022 DATA)	RANGE OVERVIEW	UNIQUE INNOVATIVE TECHNOLOGICAL PLATFORM	ABBREVIATIONS AND SYMBOLS EXPLANATION	FUEL EFFICIENCY	VERSATILITY	WINTER	COACH	URBAN	CONSTRUCTION	QUARRY & MINE	SPECIAL USE	PERFORMANCE TYRES	OTHER PRODUCTS	TYRE MARKINGS	LOAD AND SPEED TABLES	NEW EU TYRE LABELLING REGULATION	INFLATION PRESSURE	STORAGE IN A ROW ON PALLETS
-------	--	----------------------------	-------------------	---	---	--------------------	-------------	--------	-------	-------	--------------	------------------	----------------	----------------------	-------------------	------------------	-----------------------------	--	-----------------------	-----------------------------------

U02 URBAN-e PRO MULTIAXLE



The latest generation of tyres specifically designed for electric & hybrid engine urban transport featuring an increased load capacity and improved levels of comfort and sustainability.

New continuous sidewall profile featuring 5,5 mm Indicator of Sidewall Wear (ISW)



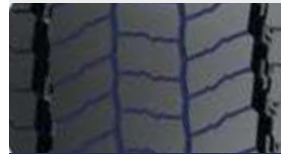
Clear sidewall wear indication

Optimized sidewall geometry, structure design and stone ejectors in grooves bottom



Maximum impact resistance and durability

New median groove shape design (Prometeon Patent) and innovative high density sipes design



Enhanced grip, traction and wet handling in all weather conditions

SIZE	LOAD INDEX / SPEED CODE	MARKING							
275/70 R 22.5	152/148 J	M+S HL	B	B	A	69dB	v		
315/60 R 22.5	156/150 J	M+S HL	B	B	A	72dB	v		



CONSTRUCTION



G02 ECO PRO MULTIAXLE



G02 ECO PRO DRIVE



G02 ON-OFF PRO MULTIAXLE



G02 ON-OFF PRO DRIVE



G02 PRO MULTIAXLE



FG:01™ II



TG:01™ II



MG:01™ II

G02 ECO PRO MULTIAXLE



The latest generation of all position tyres designed for fitment of vehicles used in construction site. Maximum durability and low fuel consumption when driving on asphalt.

Reinforced and connected tread blocks Maximum tearing resistance	Wide and deep grooves Excellent traction and high mileage	Built-in stone ejectors in lateral grooves Stone trapping prevention for maximum carcass integrity	Closed shoulders Great handling and durability
---	--	---	---

SIZE	LOAD INDEX / SPEED CODE	MARKING					
13 R 22.5	158/156K	M+S	C	B	B	72dB	✓
295/80 R 22.5*	154/149 L	M+S					
315/80 R 22.5	158/156K	M+S	C	A	B	72dB	✓

(*) = UNDER PREPARATION

G02 ECO PRO DRIVE



The latest generation of tyres for fitment on drive axle of vehicles used in construction site. Maximum durability and low fuel consumption when driving on asphalt.

Innovative Bumper Technology	Special shape sipes	Additional big stone ejectors	Built-in stone ejectors in all grooves	Waved groove surface (Prometeon patent)
Reduced tread movement and vibrations enhancing regular wear, grip and safety	To improve traction performances and maintaining low sound emission	Stone trapping and damages of the grooves prevention, and high tyre life	Stone trapping prevention for maximum carcass integrity	Easy self-cleaning and maximum traction on all surface conditions

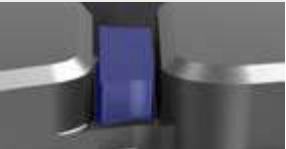


SIZE	LOAD INDEX / SPEED CODE	MARKING					
13 R 22.5	158/156K	M+S	C	B	B	75dB	✓
295/80 R 22.5*	152/149 L	M+S					
315/80 R 22.5	158/156K	M+S	C	B	B	75dB	✓




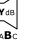

(*) = UNDER PREPARATION

G02 ON-OFF PRO MULTIAXLE



The latest generation of all position tyres designed for rugged and mixed service, featuring high retreadability, tearing resistance and off-road grip without compromise on acoustic comfort and mileage when driving on asphalt.

Reinforced and connected tread blocks	Built-in stone ejectors in all grooves	Closed shoulders	Special shape sipes
			
Maximum tearing resistance	Stone trapping prevention for maximum carcass integrity	Great handling and durability	Reduced braking distance

SIZE	LOAD INDEX / SPEED CODE	MARKING					
325/95 R 24*	162/160K	M+S					

(*) = UNDER PREPARATION

G02 ON-OFF PRO DRIVE


PROGEA


SHTB


COBe

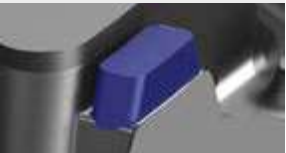

HR4B


SWiTe




The latest generation of tyres for fitment on drive axle of vehicles used for rugged and mixed service, featuring high retreadability and tearing resistance without compromise on acoustic comfort and mileage when driving on asphalt.

Innovative Bumper Technology
(Prometeon patent)




Reduced tread movement and vibrations enhancing regular wear, grip and safety

High land to sea ratio and uniform footprint contact area




Great performance in wet and dry conditions for high mileage

Built-in stone ejectors








Stone trapping prevention for maximum carcass integrity

Truncated cones (Prometeon Patent)



Easy self-cleaning

SIZE	LOAD INDEX / SPEED CODE	MARKING					
325/95 R 24*	162/160K	M+S					

(*) = UNDER PREPARATION

INDEX	PROMETEON: TYRE SOLUTIONS FOR PROFESSIONALS	KEY FIGURES (2022 DATA)	RANGE OVERVIEW	UNIQUE INNOVATIVE TECHNOLOGICAL PLATFORM	ABBREVIATIONS AND SYMBOLS EXPLANATION	FUEL EFFICIENCY	VERSATILITY	WINTER	COACH	URBAN	CONSTRUCTION	QUARRY & MINE	SPECIAL USE	PERFORMANCE TYRES	OTHER PRODUCTS	TYRE MARKINGS	LOAD AND SPEED TABLES	NEW EU TYRE LABELLING REGULATION	INFLATION PRESSURE	STORAGE IN A ROW ON PALLETS
-------	---	----------------------------	-------------------	---	---	--------------------	-------------	--------	-------	-------	--------------	------------------	----------------	----------------------	-------------------	------------------	-----------------------------	--	-----------------------	-----------------------------------

G02 PRO MULTIAXLE



The latest generation of all position tyres for mixed use service featuring low operational costs, extended tyre life and great resistance.

<p>Stone ejectors at the bottom of the grooves</p> <p>Stones trapping prevention, better durability and retreadability</p>	<p>Optimized tread pattern design with wider tread and deeper grooves</p> <p>Increased land to sea ratio for better performance in wet and dry conditions and high mileage</p>	<p>Shallow pockets and robust shoulders</p> <p>Even wear</p>	<p>Innovative bumper technology (Prometeon Patent)</p> <p>Reduced tread movement and enhanced regular wear in the central block for traction, grip and safety in any conditions</p>	<p>New reinforced casing construction</p> <p>Increased load capacity up to 10 tonnes* per axle</p>
--	--	--	---	--

SIZE	LOAD INDEX / SPEED CODE	MARKING					
385/65 R 22.5	164 K (158 L)	M+S HL	C	B	B	73dB	v

(*) = VS AP05 II

INDEX	PROMETEAON: TYRE SOLUTIONS FOR PROFESSIONALS	KEY FIGURES (2022 DATA)	RANGE OVERVIEW	UNIQUE INNOVATIVE TECHNOLOGICAL PLATFORM	ABBREVIATIONS AND SYMBOLS EXPLANATION	FUEL EFFICIENCY	VERSATILITY	WINTER	COACH	URBAN	CONSTRUCTION	QUARRY & MINE	SPECIAL USE	PERFORMANCE TYRES	OTHER PRODUCTS	TYRE MARKINGS	LOAD AND SPEED TABLES	NEW EU TYRE LABELLING REGULATION	INFLATION PRESSURE	STORAGE IN A ROW ON PALLETS
-------	--	-------------------------	----------------	--	---------------------------------------	-----------------	-------------	--------	-------	-------	--------------	---------------	-------------	-------------------	----------------	---------------	-----------------------	----------------------------------	--------------------	-----------------------------

FG:01™ II



Designed for steer and all around fitment of vehicles used in construction site, features high resistance to laceration and grip in off-road and mileage on asphalt road.

Lateral and central grooves with a built-in step

Mileage

Grooves with built-in stepstone ejectors

Stone trapping prevention for high resistance to lacerations

Protection ribs on sidewall

Enhanced resistance to lateral impacts and abrasion

Regroove depth indicators at the groove base

Easy regrooving operations

Increased land to sea ratio

High performance on asphalt roads and mileage

PICTURE: 315/80 TREAD PATTERN.
13 AND 295/80 TREAD PATTERNS: 3 GROOVES

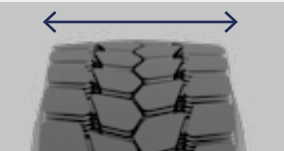
SIZE	LOAD INDEX / SPEED CODE	MARKING					
13 R 22.5	156/150 K	M+S	D	A	A	71dB	✓
295/80 R 22.5	152/148 L	M+S	D	A	B	73dB	✓
315/80 R 22.5	156/150 K	M+S	D	A	A	71dB	✓

TG:01™ II



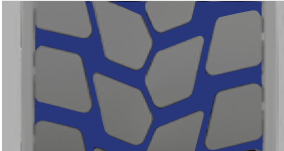
Designed for fitment on drive axle of vehicles used in construction sites, and delivers resistance to laceration, high traction on rough terrains and mud, and mileage on asphalt roads.

Large tread width




Mileage

Optimized groove design




Easy self-cleaning, traction and even wear

Protection elements (patented) at the bottom of grooves




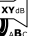



Stone trapping prevention for maximum tyre resistance

Directional tread pattern



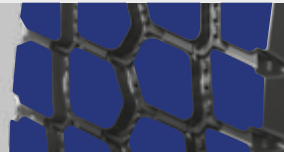
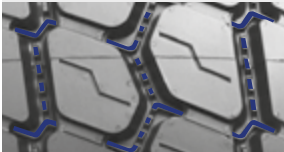
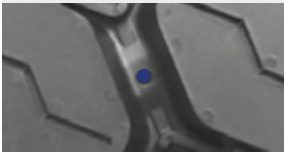
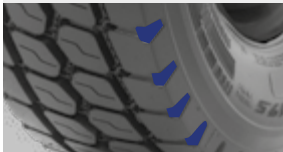
Traction, acoustic comfort and even wear






SIZE	LOAD INDEX / SPEED CODE	MARKING					
13 R 22.5	156/150 K	M+S	D	A	B	74dB	✓
295/80 R 22.5	152/148 L	M+S	E	A	B	76dB	✓
315/80 R 22.5	156/150 K	M+S	E	B	B	74dB	✓

MG:01™ II



All position tyre designed for rugged and mixed service, granting maximum resistance and high mileage.

Reinforced tread blocks	Grooves with built-in stone ejectors	Regroove depth indicators at the groove base	Protection ribs on sidewalls
			
Tearing resistance	Stone trapping prevention for high resistance to lacerations	Easy regrooving operation	Resistance to impact and scratching

SIZE	LOAD INDEX / SPEED CODE	MARKING					
265/70 R 19.5	143/141 K	M+S	D	B	A	72dB	✓



QUARRY & MINE



TQ:01™ ROCK

INDEX	PROMETEON: TYRE SOLUTIONS FOR PROFESSIONALS	KEY FIGURES (2022 DATA)	RANGE OVERVIEW	UNIQUE INNOVATIVE TECHNOLOGICAL PLATFORM	ABBREVIATIONS AND SYMBOLS EXPLANATION	FUEL EFFICIENCY	VERSATILITY	WINTER	COACH	URBAN	CONSTRUCTION	QUARRY & MINE	SPECIAL USE	PERFORMANCE TYRES	OTHER PRODUCTS	TYRE MARKINGS	LOAD AND SPEED TABLES	NEW EU TYRE LABELLING REGULATION	INFLATION PRESSURE	STORAGE IN A ROW ON PALLETS
-------	---	----------------------------	-------------------	---	---	--------------------	-------------	--------	-------	-------	--------------	------------------	----------------	----------------------	-------------------	------------------	-----------------------------	--	-----------------------	-----------------------------------

TQ:01™ ROCK



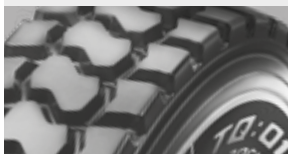
Designed to equip all axles on vehicles used on off-road routes in highly aggressive conditions such as mining, quarrying and heavy construction.

New groove geometry and transversal lugs design with helix-shape



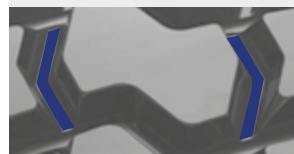
Traction in the most difficult operating conditions

Innovative tyre structure:
- thicker rubber on the belts;
- reinforced sidewall



Maximum tyre protection for long durability, resistance against lacerations and cuts, accidental impacts prevention

Bridge between the tread blocks and efficient grooves shape design



Increased block stiffness, extended tyre life, high self-cleaning capabilities and improved carcass durability

New tread compound



High mileage and long resistance to cutting and chipping

SIZE	LOAD INDEX / SPEED CODE	MARKING					
13 R 22.5	158/156 G	M+S HL POR					

INDEX	PROMETON: TYRE SOLUTIONS FOR PROFESSIONALS	KEY FIGURES (2022 DATA)	RANGE OVERVIEW	UNIQUE INNOVATIVE TECHNOLOGICAL PLATFORM	ABBREVIATIONS AND SYMBOLS EXPLANATION	FUEL EFFICIENCY	VERSATILITY	WINTER	COACH	URBAN	CONSTRUCTION	QUARRY & MINE	SPECIAL USE	PERFORMANCE TYRES	OTHER PRODUCTS	TYRE MARKINGS	LOAD AND SPEED TABLES	NEW EU TYRE LABELLING REGULATION	INFLATION PRESSURE	STORAGE IN A ROW ON PALLETS
-------	--	-------------------------	----------------	--	---------------------------------------	-----------------	-------------	--------	-------	-------	--------------	---------------	-------------	-------------------	----------------	---------------	-----------------------	----------------------------------	--------------------	-----------------------------



SPECIAL USE



S02 PISTA

INDEX	PROMETION: TYRE SOLUTIONS FOR PROFESSIONALS	KEY FIGURES (2022 DATA)	RANGE OVERVIEW	UNIQUE INNOVATIVE TECHNOLOGICAL PLATFORM	ABBREVIATIONS AND SYMBOLS EXPLANATION	FUEL EFFICIENCY	VERSATILITY	WINTER	COACH	URBAN	CONSTRUCTION	QUARRY & MINE	SPECIAL USE	PERFORMANCE TYRES	OTHER PRODUCTS	TYRE MARKINGS	LOAD AND SPEED TABLES	NEW EU TYRE LABELLING REGULATION	INFLATION PRESSURE	STORAGE IN A ROW ON PALLETS
-------	---	----------------------------	-------------------	---	---	--------------------	-------------	--------	-------	-------	--------------	------------------	----------------	----------------------	-------------------	------------------	-----------------------------	--	-----------------------	-----------------------------------

S02 PISTA



Great structural integrity for extreme and demanding off-the-road situations and various types of terrains. Ideal for traction on natural loose surfaces, tracks, mud, grass and sand, even on asphalt.

Waved walls grooves with great contact surface



Maximum traction on both snow and inconsistent terrain (sand)

S-shaped tread design



Great comfort and low noise generation when driving on asphalt

Bridges between tread blocks



Minimized tread stress for maximum durability

Available in both tube and tubeless versions



The tubeless version permits the use of the special "bead lock" and "run flat" systems inside the tyre

SIZE	LOAD INDEX / SPEED CODE	MARKING					
14.00 R 20^	164/160 K (166 J)	M+S POR ML					
14.00 R 20*^	164/160 G	M+S POR ML					
335/80 R 20*	149 K	M+S POR MPT					
365/80 R 20*	152 K	M+S POR MPT					
365/85 R 20*	164 G	M+S POR					
395/85 R 20*	168 G (161 J)	M+S POR					

(*) = PS22 PISTA
(^) = RFID MARKING



PERFORMANCE TYRES



VERSATILITY



URBAN



CONSTRUCTION



ITINERIS™ S

ITINERIS™ D



ITINERIS™ T



MC88 III M+S AMARANTO



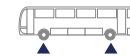
FG88™



TG88™

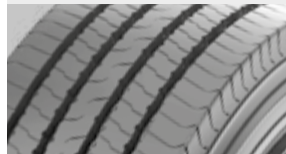
INDEX	PROMETEON: TYRE SOLUTIONS FOR PROFESSIONALS	KEY FIGURES (2022 DATA)	RANGE OVERVIEW	UNIQUE INNOVATIVE TECHNOLOGICAL PLATFORM	ABBREVIATIONS AND SYMBOLS EXPLANATION	FUEL EFFICIENCY	VERSATILITY	WINTER	COACH	URBAN	CONSTRUCTION	QUARRY & MINE	SPECIAL USE	PERFORMANCE TYRES	OTHER PRODUCTS	TYRE MARKINGS	LOAD AND SPEED TABLES	NEW EU TYRE LABELLING REGULATION	INFLATION PRESSURE	STORAGE IN A ROW ON PALLETS
-------	---	----------------------------	-------------------	---	---	--------------------	-------------	--------	-------	-------	--------------	------------------	----------------	----------------------	-------------------	------------------	-----------------------------	--	-----------------------	-----------------------------------

ITINERIS™ S



Steer axle tyre providing great road holding and steering precision, as well as superior grip performance.

4 straight shape grooves and robust longitudinal ribs



Grip, roadholding, steering precision and short braking distance

Functional sipes



Snow and wet grip performance

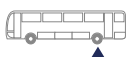
Stone-ejectors at the bottom of the grooves



Stone trapping and casing damage prevention

SIZE	LOAD INDEX / SPEED CODE	MARKING					
295/80 R 22.5	154/149 M	M+S	C	B	A	69dB	✓
315/70 R 22.5	156/150 L (154/150 M)	M+S	C	B	A	72dB	✓
315/80 R 22.5	156/150 L (154/150 M)	M+S	D	B	A	72dB	✓

ITINERIS™ D



Drive axle tyre providing great even wear, mileage and traction.

Directional tread pattern and optimized tread block pitch sequence

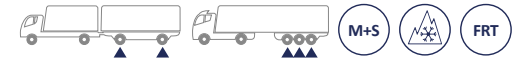
Mileage, even wear and low rolling resistance

Transversal grooves with optimized geometry

Easy stone ejection and high traction

SIZE	LOAD INDEX / SPEED CODE	MARKING					
295/80 R 22.5	152/148 M	M+S	D	C	A	73dB	✓
315/70 R 22.5	154/150 L (152/148 M)	M+S	D	C	B	74dB	✓
315/80 R 22.5	156/150 L (154/150 M)	M+S	D	C	A	73dB	✓

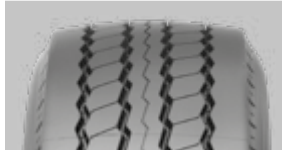
ITINERIS™ T



Trailer tyre providing superior handling in dry and wet conditions, excellent lateral stability, outstanding wet grip, while ensuring high mileage and tearing resistance.



The tread pattern profile with optimized footprint



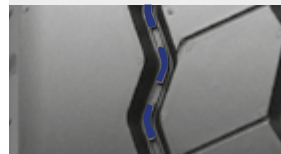
Reduction of the abrasion at the shoulder due to lateral slipping

Zig-zag grooves



Road holding on slippery surfaces

Stone ejectors at the bottom of the lateral grooves



Stone trapping and casing damages prevention

Lateral cavities



Increased ventilation in the buttress area and low heat generation

SIZE	LOAD INDEX / SPEED CODE	MARKING						
385/55 R 22.5*	160 K	M+S FRT	B	A	B	71dB	✓	
385/65 R 22.5	160 K (158 L)	M+S FRT	C	A	A	70dB	✓	

(*) RFID MARKING

INDEX	PROMETEAON: TYRE SOLUTIONS FOR PROFESSIONALS	KEY FIGURES (2022 DATA)	RANGE OVERVIEW	UNIQUE INNOVATIVE TECHNOLOGICAL PLATFORM	ABBREVIATIONS AND SYMBOLS EXPLANATION	FUEL EFFICIENCY	VERSATILITY	WINTER	COACH	URBAN	CONSTRUCTION	QUARRY & MINE	SPECIAL USE	PERFORMANCE TYRES	OTHER PRODUCTS	TYRE MARKINGS	LOAD AND SPEED TABLES	NEW EU TYRE LABELLING REGULATION	INFLATION PRESSURE	STORAGE IN A ROW ON PALLETS
-------	--	-------------------------	----------------	--	---------------------------------------	-----------------	-------------	--------	-------	-------	--------------	---------------	-------------	-------------------	----------------	---------------	-----------------------	----------------------------------	--------------------	-----------------------------

MC88 III M+S AMARANTO



Designed to offer great road grip and mileage for urban transport, in all weather conditions.

3-groove design with a broad contact area

Long tread life and high mileage

Zig-zag pattern design

High traction even in severe winter conditions

High density sipes

Enhanced grip, traction and handling on slippery surfaces and in all weather conditions

New sidewall geometry and kerbings on the tyre shoulders

Protection from sidewall impacts easy operations to gauge the level of residual compound

SIZE	LOAD INDEX / SPEED CODE	MARKING					
275/70 R 22.5	150/148 J (152/148 E)	M+S	C	B	B	72dB	✓

INDEX	PROMETEON: TYRE SOLUTIONS FOR PROFESSIONALS	KEY FIGURES (2022 DATA)	RANGE OVERVIEW	UNIQUE INNOVATIVE TECHNOLOGICAL PLATFORM	ABBREVIATIONS AND SYMBOLS EXPLANATION	FUEL EFFICIENCY	VERSATILITY	WINTER	COACH	URBAN	CONSTRUCTION	QUARRY & MINE	SPECIAL USE	PERFORMANCE TYRES	OTHER PRODUCTS	TYRE MARKINGS	LOAD AND SPEED TABLES	NEW EU TYRE LABELLING REGULATION	INFLATION PRESSURE	STORAGE IN A ROW ON PALLETS
-------	---	-------------------------	----------------	--	---------------------------------------	-----------------	-------------	--------	-------	-------	--------------	---------------	-------------	-------------------	----------------	---------------	-----------------------	----------------------------------	--------------------	-----------------------------

FG88™



Steer axle tyre designed to ensure resistance to tears and lacerations and mileage in construction sites.

Lower operating temperatures promote tyre integrity and retreadability.

<p>Robust circumferential ribs, rounded contour and an optimized tread groove profile</p> <p>High resistance to lacerations</p>	<p>Large tread width</p> <p>Long tyre life and mileage</p>	<p>Stone ejectors at the bottom of the central groove</p> <p>Stone trapping and casing damages prevention</p>	<p>Zig-zag longitudinal grooves and wide transversal shoulder grooves</p> <p>Grip performance on any surface</p>
---	--	---	--

SIZE	LOAD INDEX / SPEED CODE	MARKING					
13 R 22.5	156/150 K	M+S	D	B	A	70dB	✓
315/80 R 22.5	156/150 K	M+S	D	B	B	72dB	✓

INDEX	PROMETEAON: TYRE SOLUTIONS FOR PROFESSIONALS	KEY FIGURES (2022 DATA)	RANGE OVERVIEW	UNIQUE INNOVATIVE TECHNOLOGICAL PLATFORM	ABBREVIATIONS AND SYMBOLS EXPLANATION	FUEL EFFICIENCY	VERSATILITY	WINTER	COACH	URBAN	CONSTRUCTION	QUARRY & MINE	SPECIAL USE	PERFORMANCE TYRES	OTHER PRODUCTS	TYRE MARKINGS	LOAD AND SPEED TABLES	NEW EU TYRE LABELLING REGULATION	INFLATION PRESSURE	STORAGE IN A ROW ON PALLETS
-------	--	-------------------------	----------------	--	---------------------------------------	-----------------	-------------	--------	-------	-------	--------------	---------------	-------------	-------------------	----------------	---------------	-----------------------	----------------------------------	--------------------	-----------------------------


TG88™



Drive axle tyre designed to ensure resistance to tears and lacerations and mileage in construction sites.

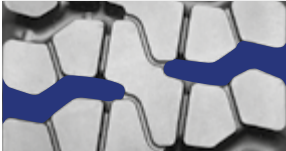
Lower operating temperatures benefit tyre integrity and retreadability.

Robust shoulder blocks, massive central rib and optimized sectional transversal grooves




Resistance to tears and lacerations

Wide and deep transversal grooves




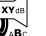



Roadholding and traction on slippery surfaces

Large tread width



Long tyre life and mileage

SIZE	LOAD INDEX / SPEED CODE	MARKING					
13 R 22.5	156/150 K	M+S	D	B	B	74dB	✓
315/80 R 22.5	156/150 K	M+S	D	B	B	74dB	✓

OTHER PRODUCTS

FH15 / FR25



SIZE

LOAD INDEX /
SPEED CODE

MARKING



FH15

255/70 R 22.5

140/137 M

M+S

D

A

A

67dB

✓

FR25

11 R 22.5

148/145 L

M+S

D

B

A

68dB

✓

12 R 22.5

152/148 M

M+S

D

A

A

71dB

✓

FG85



SIZE

LOAD INDEX /
SPEED CODE

MARKING



12.00 R 20

154/150 K (156/150 G)

M+S

D

B

B

72dB

✓

11 R 22.5

148/145 K

E

C

B

73dB

12 R 22.5

152/148 L

M+S

D

A

A

71dB

✓

12.00 R 24

160/156 K

M+S

D

B

A

71dB

✓

TR25



SIZE

LOAD INDEX /
SPEED CODE

MARKING



12 R 22.5

152/148 M

M+S

E

B

B

75dB

✓

TG85



SIZE

LOAD INDEX /
SPEED CODE

MARKING



12.00 R 20*

154/150 K (156/150 G)

M+S

E

C

B

74dB

✓

12.00 R 20

154/150 K (156/150 G)

M+S

D

B

B

74dB

✓

12 R 22.5

152/148 L

M+S

D

B

B

74dB

✓

12.00 R 24

160/156 K

M+S

D

B

B

74dB

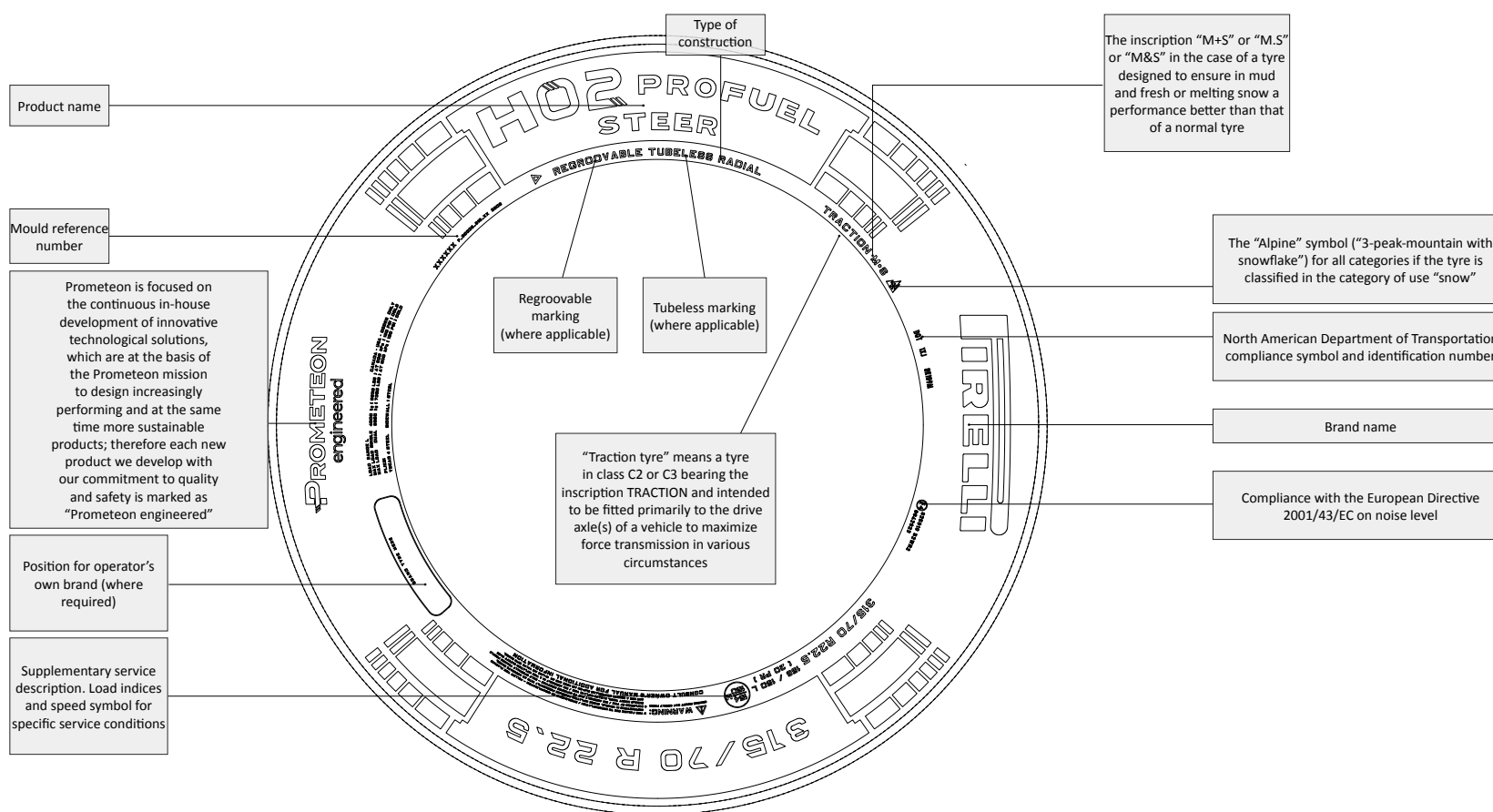
✓

(*) TUBELESS VERSION

TYRE MARKINGS

Nominal aspect ratio or series (H/S*100)

315/70	R	22.5	156/150	L	
Nominal section width (or width code)	Construction code	Nominal rim diameter (Code)	Load indices (single / dual)	Speed symbol	Ply rating. Indicates different versions (load capacity/inflation pressure) of tyres having the same size designation
12.00	R	20	154/150	K	20PR



INDEX	PROMETEON: TYRE SOLUTIONS FOR PROFESSIONALS	KEY FIGURES (2022 DATA)	RANGE OVERVIEW	UNIQUE INNOVATIVE TECHNOLOGICAL PLATFORM	ABBREVIATIONS AND SYMBOLS EXPLANATION	FUEL EFFICIENCY	VERSATILITY	WINTER	COACH	URBAN	CONSTRUCTION	QUARRY & MINE	SPECIAL USE	PERFORMANCE TYRES	OTHER PRODUCTS	TYRE MARKINGS	LOAD AND SPEED TABLES	NEW EU TYRE LABELLING REGULATION	INFLATION PRESSURE	STORAGE IN A ROW ON PALLETS
-------	---	----------------------------	-------------------	---	---	--------------------	-------------	--------	-------	-------	--------------	------------------	----------------	----------------------	-------------------	------------------	-----------------------------	--	-----------------------	-----------------------------------

LOAD AND SPEED TABLES

CONVERSION OF LOAD INDICES (LI) INTO LOAD CAPACITIES PER TYRE [KG AND LBS]

LI	KG	LBS	LI	KG	LBS	LI	KG	LBS
80	450	990	111	1090	2405	141	2575	5675
81	462	1020	112	1120	2470	142	2650	5840
82	475	1045	113	1150	2535	143	2725	6010
83	487	1075	114	1180	2600	144	2800	6175
84	500	1100	115	1215	2680	145	2900	6395
85	515	1135	116	1250	2755	146	3000	6615
86	530	1170	117	1285	2835	147	3075	6780
87	545	1200	118	1320	2910	148	3150	6945
88	560	1235	119	1360	3000	149	3250	7165
89	580	1280	120	1400	3085	150	3350	7385
90	600	1325	121	1450	3195	151	3450	7605
91	615	1355	122	1500	3305	152	3550	7825
92	630	1390	123	1550	3415	153	3650	8045
93	650	1435	124	1600	3525	154	3750	8265
94	670	1475	125	1650	3640	155	3875	8545
95	690	1520	126	1700	3750	156	4000	8820
96	710	1565	127	1750	3860	157	4125	9095
97	730	1610	128	1800	3970	158	4250	9370
98	750	1655	129	1850	4080	159	4375	9645
99	775	1710	130	1900	4190	160	4500	9920
100	800	1765	131	1950	4300	161	4625	10195
101	825	1820	132	2000	4410	162	4750	10470
102	850	1875	133	2060	4540	163	4875	10745
103	875	1930	134	2120	4675	164	5000	11025
104	900	1985	135	2180	4805	165	5150	11355
105	925	2040	136	2240	4940	166	5300	11685
106	950	2095	137	2300	5070	167	5450	12015
107	975	2150	138	2360	5205	168	5600	12345
108	1000	2205	139	2430	5355	169	5800	12785
109	1030	2270	140	2500	5510	170	6000	13230
110	1060	2335						

SPEED SYMBOLS [KM/H & MPH]

SYMBOL	E	F	G	J	K	L	M	N	P	Q	R	S	T
KM/H M.P.H.	70 43	80 50	90 56	100 62	110 68	120 75	130 81	140 87	150 93	160 99	170 106	180 112	190 118

INDEX	PROMETEAON: TYRE SOLUTIONS FOR PROFESSIONALS	KEY FIGURES (2022 DATA)	RANGE OVERVIEW	UNIQUE INNOVATIVE TECHNOLOGICAL PLATFORM	ABBREVIATIONS AND SYMBOLS EXPLANATION	FUEL EFFICIENCY	VERSATILITY	WINTER	COACH	URBAN	CONSTRUCTION	QUARRY & MINE	SPECIAL USE	PERFORMANCE TYRES	OTHER PRODUCTS	TYRE MARKINGS	LOAD AND SPEED TABLES	NEW EU TYRE LABELLING REGULATION	INFLATION PRESSURE	STORAGE IN A ROW ON PALLETS
-------	--	----------------------------	-------------------	---	---	--------------------	-------------	--------	-------	-------	--------------	------------------	----------------	----------------------	-------------------	------------------	-----------------------------	--	-----------------------	-----------------------------------

NEW EU TYRE LABELLING REGULATION N. 2020/740

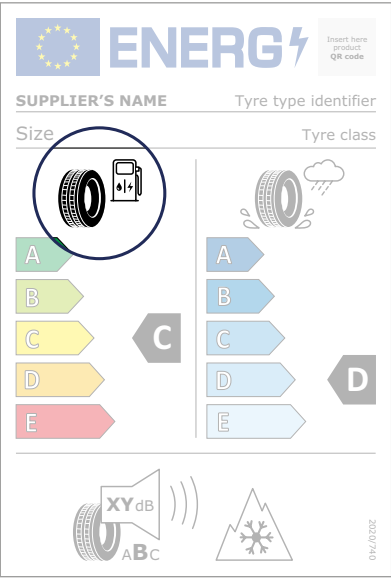
Regulation (EC) No 1222/2009 first introduced the obligation of placing car and van tyres on the EU market with a sticker showing the label with information on the fuel efficiency (rolling resistance), wet grip and external noise of the tyres.

Under the new (EU) 2020/740 regulation, bus and truck tyres are also covered.

In addition to fuel efficiency, safety and noise emission, the new EU Energy Label reports also 3PMSF marking and QR code to access to a public database where the label information are stored and accessible to all.

Careful driving with awareness helps the environment and safety. Actual fuel savings and road safety heavily depend on drivers’ behaviour and correct tyre management and care:

- eco-driving can significantly reduce fuel consumption;
- tyre pressure needs to be regularly checked to optimize fuel efficiency and wet grip;
- braking distances must always be respected.



FUEL EFFICIENCY associated to the tyre’s rolling resistance.

Rolling Resistance is a force acting opposite to the travel direction when the tyre is rolling.

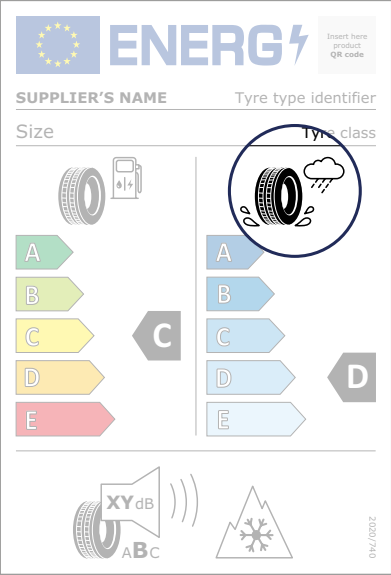
Considering that tyres contribute up to 20% of the overall fuel consumption for a car and up to 33% for a truck (for long haulage application), it is important to reach low Rolling Resistance values.

Let’s understand how it works: due to the vehicle load, the tyre is deformed in the contact area with the road surface dissipating energy in form of heat. The higher deformations, the higher the rolling resistance and consequently more fuel consumption and CO2 emissions.

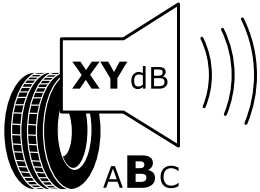
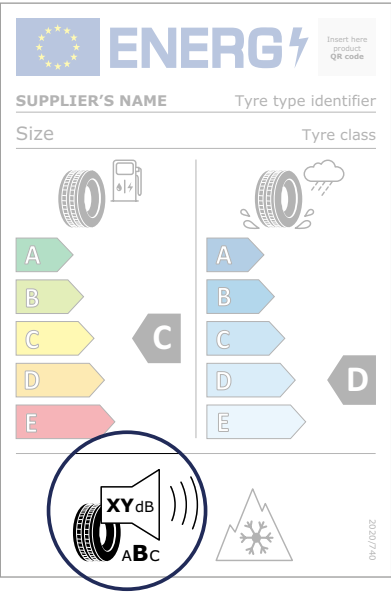
In the EU tyre regulation label, rolling resistance is expressed in grades, ranging from A (best grading) to E (worst grading) for industrial vehicles and cars.

INDEX	PROMETEON: TYRE SOLUTIONS FOR PROFESSIONALS	KEY FIGURES (2022 DATA)	RANGE OVERVIEW	UNIQUE INNOVATIVE TECHNOLOGICAL PLATFORM	ABBREVIATIONS AND SYMBOLS EXPLANATION	FUEL EFFICIENCY	VERSATILITY	WINTER	COACH	URBAN	CONSTRUCTION	QUARRY & MINE	SPECIAL USE	PERFORMANCE TYRES	OTHER PRODUCTS	TYRE MARKINGS	LOAD AND SPEED TABLES	NEW EU TYRE LABELLING REGULATION	INFLATION PRESSURE	STORAGE IN A ROW ON PALLETS
-------	---	----------------------------	-------------------	---	---	--------------------	-------------	--------	-------	-------	--------------	------------------	----------------	----------------------	-------------------	------------------	-----------------------------	--	-----------------------	-----------------------------------

NEW EU TYRE LABELLING REGULATION N. 2020/740



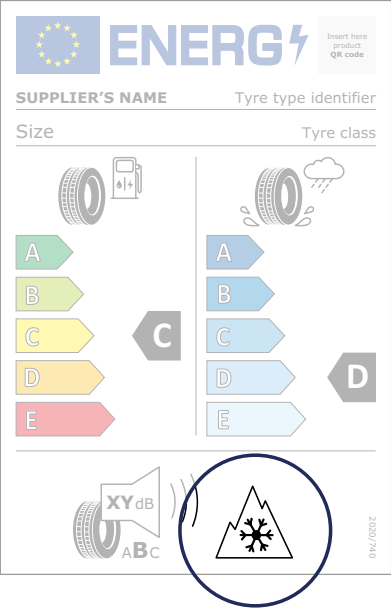
SAFETY associated to the tyre's wet grip.
Wet grip is one of the most important safety performance of a tyre. Excellent grip on wet means shorter braking distances when driving in rainy weather. There are other important parameters which are relevant for safety, but wet grip was chosen as the most representative situation in order to compare different tyres. It ranges from A (shorter braking distance on wet asphalt) to E for truck. The difference between each grade means an increase or decrease in stopping distance of roughly 2 and 3 meters when braking from 60 km/h to 20Km/h.



EXTERNAL NOISE LEVEL (given in decibels)
Traffic noise is a relevant environmental issue determined by several factors such as traffic intensity, vehicle type, driving style, tyre-road interaction. The value indicated in the label is not the internal that the driver will perceive while driving, but the external one, that is contributing to acoustic pollution. It is expressed in decibel (dB) and split in 3 categories:
- A class (best performance): at least 3dB less than the Limit Value of EU reg. 661/2009;
- B class: compliant with the limit value of EU reg 661/2009;
- C class (worst performance): compliant with homologative limits but over the limit value of EU reg. 661/2009.

INDEX	PROMETON: TYRE SOLUTIONS FOR PROFESSIONALS	KEY FIGURES (2022 DATA)	RANGE OVERVIEW	UNIQUE INNOVATIVE TECHNOLOGICAL PLATFORM	ABBREVIATIONS AND SYMBOLS EXPLANATION	FUEL EFFICIENCY	VERSATILITY	WINTER	COACH	URBAN	CONSTRUCTION	QUARRY & MINE	SPECIAL USE	PERFORMANCE TYRES	OTHER PRODUCTS	TYRE MARKINGS	LOAD AND SPEED TABLES	NEW EU TYRE LABELLING REGULATION	INFLATION PRESSURE	STORAGE IN A ROW ON PALLETS
-------	--	----------------------------	-------------------	---	---	--------------------	-------------	--------	-------	-------	--------------	------------------	----------------	----------------------	-------------------	------------------	-----------------------------	--	-----------------------	-----------------------------------

NEW EU TYRE LABELLING REGULATION N. 2020/740



TYRE FOR USE IN SEVERE SNOW CONDITIONS

(3PMSE symbol)

The tyre bearing this symbol is specifically designed for use in severe snow conditions and can bear the symbol only after a specific test for the measurement of snow grip performances.

The pictogram known as 'Alpine Symbol' or '3 Peaks Mountain Snow Flake' or (3PMSE) is also included on the tyre label of a tyre which satisfies the minimum snow grip index values set out in the 2020/740 regulation that provide also the testing method.

Many European countries are increasing the adoption of legislations that allow the vehicles circulation during winter season only to vehicles provided with tyres bearing Alpine symbol in some different conditions (roads, regions or periods).

EPREL database / Product information sheet

(European Product Registry for Energy Labelling)

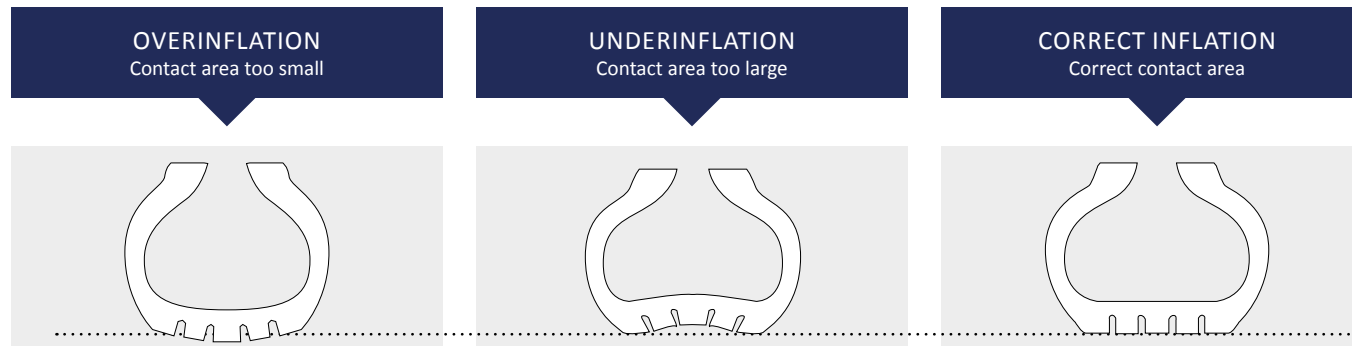
According to the EU label regulation 2020/740, tires sold in Europe must have an Energy Label and the related information must be registered on the EPREL. Through the QR code displayed on the Label or Trademark and Tyre Type Identifier, consumers can access the public web portal and download:

- official EU Label values;
- product information sheet, which includes the designation data and grading for each Tyre Type Identifier.

INDEX	PROMETEAON: TYRE SOLUTIONS FOR PROFESSIONALS	KEY FIGURES (2022 DATA)	RANGE OVERVIEW	UNIQUE INNOVATIVE TECHNOLOGICAL PLATFORM	ABBREVIATIONS AND SYMBOLS EXPLANATION	FUEL EFFICIENCY	VERSATILITY	WINTER	COACH	URBAN	CONSTRUCTION	QUARRY & MINE	SPECIAL USE	PERFORMANCE TYRES	OTHER PRODUCTS	TYRE MARKINGS	LOAD AND SPEED TABLES	NEW EU TYRE LABELLING REGULATION	INFLATION PRESSURE	STORAGE IN A ROW ON PALLETS
-------	--	----------------------------	-------------------	---	---	--------------------	-------------	--------	-------	-------	--------------	------------------	----------------	----------------------	-------------------	------------------	-----------------------------	--	-----------------------	-----------------------------------

INFLATION PRESSURE

This is one of the factors that mostly influences tyre efficiency. It is the compressed gas in the tyre that supports the load. Incorrect pressure, whether associated with overinflation or underinflation, will either have the effect of over “supporting” the tyre and causing casing stress, or under “supporting” it, with a consequent increase in flexing and generation of an excessive amount of heat, and this may cause tyre failure. Flexing during service is a function of the load supported by the tyre and of the inflation pressure; it is predetermined in the design phase to optimise the tyre performance. Inflation pressure must always depend upon the actual load per axle, to guarantee the proper tyre flexing. Overload leads to similar effects as underinflation. When the correct pressure is used even the tyre footprint area, i.e.: the contact surface between the tread and the road, will be optimal and this is a determining factor to guarantee even wear.



We should recall that the pressure must be measured when the tyre is cold, after the vehicle has been standing for several hours.

With regards to pressure check, we recommend compliance with the following instructions:

USE	PRESSURE CHECK (DAYS)*			
ON/OFF ROAD	1	7	10	15
Radius of activity up to 100 km			•	
Radius of activity over 100 km		•		
On building sites in one shift		•		
On building sites in 2/3 shifts	•			
ON	1	7	10	15
km covered per month up to 8000 km				•
km covered per month over 8000 km		•		

DO NOT “BLEED” TYRES

One of the causes of underinflation is the practice of “bleeding” tyres i.e. reducing the pressure in tyres which have run, warmed up and, therefore, increased in pressure above their starting pressure. Due to casing deflection, all tyres generate heat in operation. This causes the inflation air to warm up, it will try to expand but, because it is confined and cannot, the pressure increases. Such increase is quite normal and tyres are designed safely to withstand it. If air is let out to reduce the pressure, it will mean that the tyre is working at too great a deflection for a hot tyre, i.e. it is in fact under inflated in relation to the load carried. The increased deflection will generate even more heat: the tyre may again reach the higher pressure, but it will be hotter still.

(*) Make sure the valve cap is always properly screwed. The spare wheel must be checked as well.

STORAGE IN A ROW ON PALLETS (BEST METHOD)

STORAGE OF PRODUCTS

Moist conditions should be avoided. Care must be taken to ensure no condensation occurs. Tyres have to be stored inside in cool, dry and moderately ventilated conditions. Skylights and windows have to be positioned such that sunlight does not fall directly onto the stored products. The storage temperature should be ideally between 5°C and 25°C, not above 35°C. The effects of low temperature fall directly onto the stored products. Care should be taken therefore to avoid distorting them during handling at that temperature, because cracks may appear. In case of stacking tyres in piles, the following rules must be followed for method, stack height etc:

SECTION WIDTH		MAX NO. TYRES PER PILE	NO. OF TYRES FOR ANCHORAGE
Light truck and truck	Up to 8" or 205 mm	10	+2
	9" – 10" or 215-255 mm	9	+2
	11"-12" or 265-315 mm	8	+2
	Over 12" or 315 mm	4	+2

SHORT TERM STORAGE

Up to 4 weeks, tyres can be stored in stacks, one on top of the other, preferably on a fixed rack or on stackable pallets, reforming the stack inverting the order of the tyres on a weekly basis. In all cases when tyres are stored in stacks, it is necessary to ensure that there is no partial misplacement from the vertical plane, in order to avoid any permanent deformation of the lower tyres in the stack.

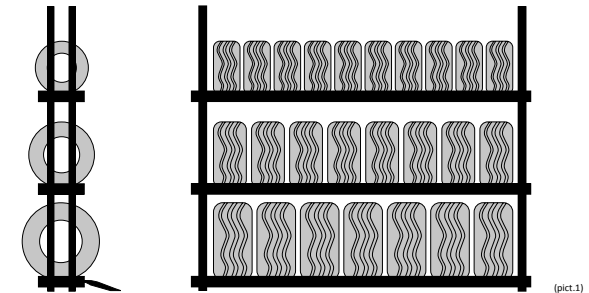
The maximum height of the stack must not exceed 1.2m and the tyres in the stack must all be of the same dimension.

INNER TUBES AND VALVES

Whether inner tubes are supplied by the producer in single boxes, large boxes or wrapped in plastic film, it is always preferable to maintain the original packaging.

In alternative they can be stored also slightly inflated, inserted within the tyre, or piled deflated, up to a maximum height of 50 cm, on racking shelves with a closed base, accurately avoiding that the valve can damage the surface of the tube when squashed under the pressure of their own weight.

Ensure that the tubes do not overlap the edge of the plane on which they are stored to avoid accidental laceration. It is not recommended to store on slatted pallets because the pressure applied to the tubes will not be uniform. Do not hang inner tubes during storage. Valves should be stored in their packaging in a clean, well ventilated and dry location.



FLAPS

Flaps should preferably be placed within the tyre together with the inner tube. If they are stored separately, they should be placed horizontally, in a pile on a shelf, protected from dust, grease, humidity, ozone and direct sunlight. To avoid deformation and stretching they must not be hung up in any way.

STOCK ROTATION

The storage location must be organized in such a way as to guarantee constant stock rotation, limiting to the minimum the storage period of the tyres. Products which enter storage first must be the first to leave. First in, first out.

ATTENTION!

The information contained in this manual relates to tyres designed exclusively for goods vehicles and/or passenger vehicles. Any other applications are not permitted.

INCORRECT OR IMPROPERLY USED TYRES CAN BE DANGEROUS.
TYRES HAVE TO BE USED IN THE CORRECT SEGMENT OF APPLICATION, AS SPECIFIED FOR EACH PRODUCT IN THE TECHNICAL CATALOGUE.

The manual has been produced in an easily understood form for information purposes and is not intended to be comprehensive in nature. The data given will be updated periodically.

Since the manual is intended for international use the information may not reflect national legislative requirements which must be taken into consideration.

With regard to care and maintenance it is necessary to follow the tyre manufacturer's instructions. In particular, please remember that tyres age even if they have not been used or have only been used occasionally. Cracking of the tread and sidewall rubber, sometimes accompanied by carcass deformation, is evidence of ageing.

Old and aged tyres must be checked by a tyre specialist to ascertain their suitability for further use.

If in doubt concerning the interpretation of information please contact your local Prometeon representative.

THE PIRELLI LOGO, SATT™, ENERGY™, FH:01™, TH:01™, FR:01™, TR:01™, FG:01™, TG:01™, PS22™, TRIATHLON™, NEVERENDING™, ST:01™, FW:01™, TW:01™, MC88™, FG88™, TG88™ ARE TRADEMARKS USED BY PROMETEON TYRE GROUP UNDER LICENSE.

PROUD SPONSOR OF



FOLLOW US



prometeontyregroup



Prometeon Tyre Group



Prometeon Tyre Group



Prometeon Tyre Group

Discover more on [prometeon.com](https://www.prometeon.com)