

**READY FOR
WHATEVER'S
AHEAD.**

**NEW
SP247 3PMSF
TRAILER TYRES**

April 2020



WHAT THE MARKET WANTS

Dunlop introduces a new trailer tyre with full 3PMSF marking without compromising on other performance criteria: **SP247**

In this segment there is an expectation by the customer of **high mileage, good performance in all weather conditions and low cost per kilometer.**

The evolution of winter tyre regulations in many European countries requires **3PMSF / snowflake** marked tyres also on trailer axles.

Therefore the new tyre has been specifically designed to offer **3PMSF and extended all-weather capabilities** while keeping up the **high mileage** and **high durability** in all on-road application types:

- Long distances
- Regional distribution applications
- Severe on-road service
- Urban traffic

SP 247 KEY FEATURES

The new product features latest design technology in combination with robust casing constructions, enabling the following advantages to help reduce operating costs :

- **High mileage** performance in all on-road applications
- **Functional versatility** in a wide range of services from long haul to urban traffic
- **Winter capabilities (3PMSF)** and **life long braking performance** for trailers, in compliance with new and upcoming regulations
- **Low energy consumption** thanks to well controlled rolling resistance



- 5-rib design (6-rib with 435/50R19.5 and 385/55R22.5)
- excellent winter mobility (M+S and 3PMSF homologated)
- 3PMSF capability without trade-offs on other performances
- no change in mileage due to the sipes
- sipes go down beyond the 50% worn stage

***READY FOR
WHATEVER'S
AHEAD.***



SP247 19.5/22.5"

*Trailer Tyre
Features and Benefits*



SP247 TREAD DESIGN



Feature

Optimized 5-rib tread design
(6-rib with 435/50R19.5 and 385/55R22.5)



How it works

Optimized rib layout to ensure even contact pressure distribution and shoulder robustness with all tyre sizes



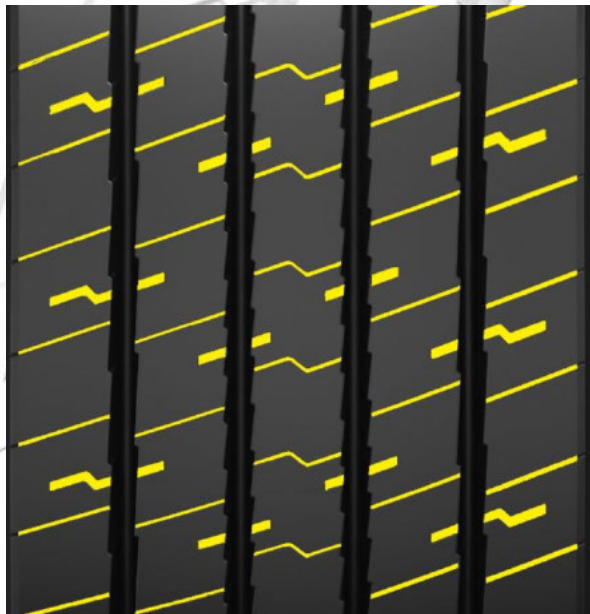
Advantages

Damage and wear resistance for high mileage and long service life under severe conditions

385/65R22.5



SP247 DEEP SIPES



Feature

Deep sipes down to 2/3 of the full tread depth

How it works

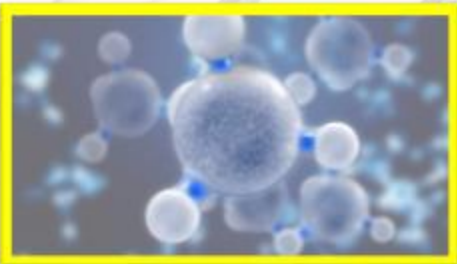
Sipes create additional biting edges to interlock with the road surface until late life

Advantages

3PMSF marking; compliance with restrictive EU winter legislations; short braking distances and improved wet grip throughout tire life; no compromise on mileage or other performance criteria



SP247 TREAD COMPOUND



Feature

Cool running/high abrasion resistant tread compound



How it works

The chemical formulation and polymer network ensure a good rolling resistance combined with excellent resistance against treadwear and lateral scrubbing



Advantages

High mileage and fuel efficiency



SP247 UNDERTREAD RUBBER



Feature

Increased undertread rubber volume with 385/65R22.5



How it works

Better protection against trapped stones or rough and demanding road surfaces, less risk of casing damages



Advantages

Longer service life in severe applications, improved damage resistance and retreadability

SP247 SUMMARY



FEATURES



- ① Optimized 5-rib tread design (6-rib with 435/50R19.5 and 385/55R22.5)
- ② Deep sipes down to 2/3 of the full tread depth
- ③ Cool running/high abrasion resistant tread compound
- ④ Increased undertread rubber volume with 385/65R22.5

HOW DOES IT WORK



- Optimized rib layout to ensure even contact pressure distribution and shoulder robustness with all tyre sizes
- Sipes create additional biting edges to interlock with the road surface until late life
- Chemical formulation and polymer network for good rolling resistance combined with excellent resistance against treadwear and lateral scrubbing.
- Protection against trapped stones or rough and demanding road surfaces, less casing damages

ADVANTAGES



- Damage and wear resistance for high mileage and long service life under severe conditions
- 3PMSF marking; compliance with restrictive EU winter legislations; short braking distances and improved wet grip throughout tire life; no compromise on other performance criteria
- High mileage and fuel efficiency
- Longer service life in severe applications, improved damage resistance and retreadability



The SP247 combines robust design with very good mileage plus 3PMSF marking on all sizes.

SP247 TREAD PATTERN EVOLUTION

New

25% worn

50% worn

75% worn

100% worn (TWI-level)



SP247

SP247 TECHNICAL CHARACTERISTICS

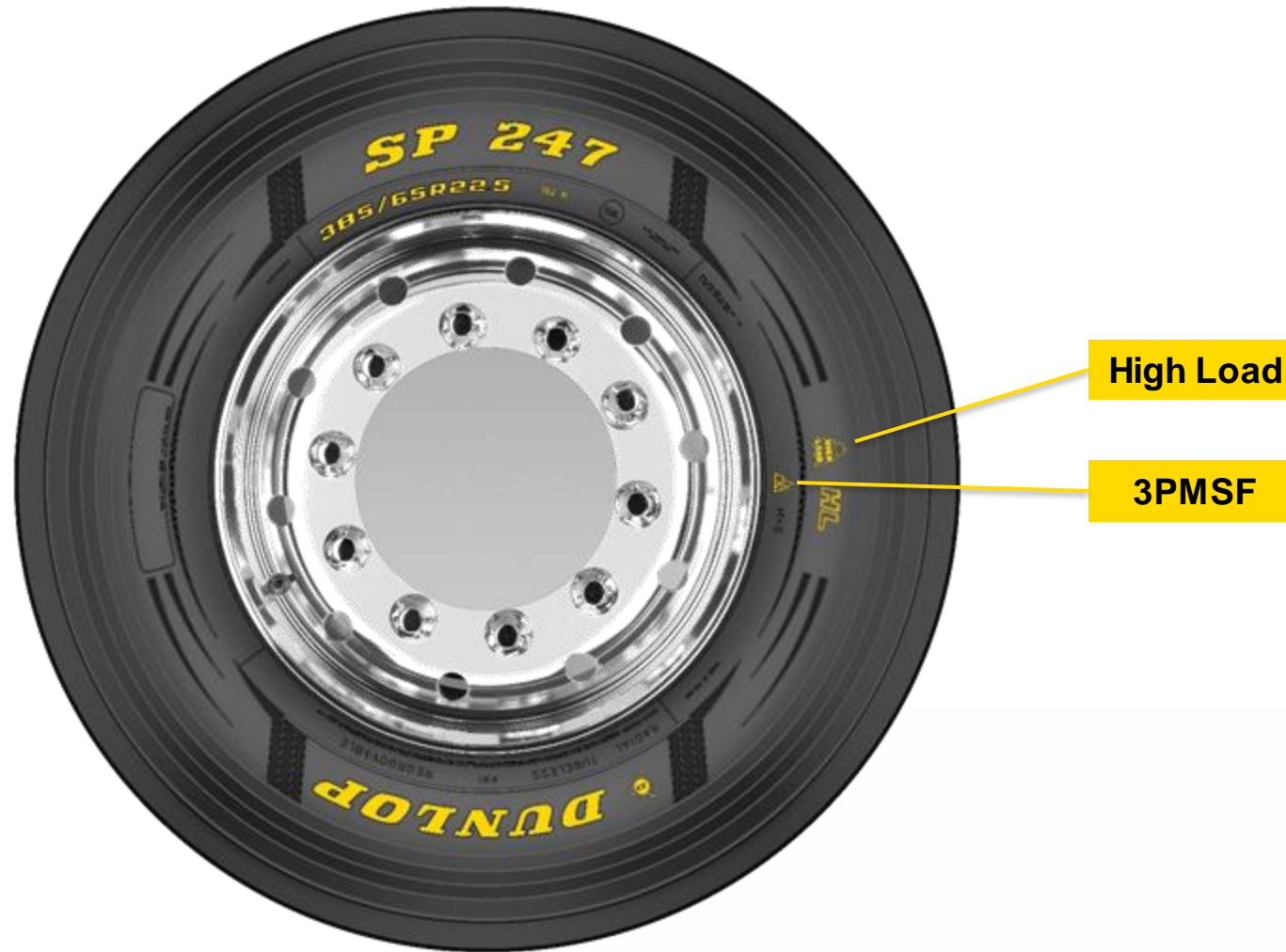


KEY FEATURES	SP246	SP247	IMPACT
3PMSF	n/a	✓	Full compliance with current winter legislation
Removal mileage*	100	100	No compromise on mileage
Sipe depth, half worn	0 mm	3 mm	Late life grip
Mid life braking performance	o	+	Increased winter performance and wet grip

Full 3PMSF compliance and improved wet braking at late life without compromise on other key features

* Index based on the actual mileage potential of SP246 in %

SP247 – SIDEWALL DESIGN



SP247 – LINEUP

Size	LI/SI1	LI/SI2	Design	FE	WG	dB	Ext.N.	SAP	Comment
435/50 R 19.5	160 J		SP247	B	B	72))	572203	6-rib
385/65 R 22.5	164 K	158 L	SP247	C	B	72))	572202	5-rib
385/55 R 22.5	160 K	158 L	SP247	*	*	*	*	572201	6-rib

Line up

Most popular sizes in the lineup

Availability is updated through regular information channels

Tires will replace actually available SP246 products

